

TECHNICAL MANUAL
ORGANIZATIONAL, DIRECT SUPPORT AND GENERAL
SUPPORT MAINTENANCE REPAIR PARTS
AND SPECIAL TOOLS LISTS (INCLUDING DEPOT
MAINTENANCE REPAIR PARTS AND SPECIAL TOOLS)

COMPRESSOR, AIR, RECIPROCATING,
ELECTRIC MOTOR DRIVEN,
RECEIVER MOUNTED, 2HP, 5CFM, 175PSI
INGERSOLL-RAND MODEL 234C2
FSN 4310-155-7101

HEADQUARTERS, DEPARTMENT OF THE ARMY
OCTOBER 1973

CHANGE
NO.1

HEADQUARTERS
DEPARTMENT OF THE ARMY
WASHINGTON, D.C., 31 August 1993

ORGANIZATIONAL, DIRECT SUPPORT AND GENERAL
SUPPORT MAINTENANCE REPAIR PARTS
AND SPECIAL TOOLS LISTS (INCLUDING DEPOT
MAINTENANCE REPAIR PARTS AND SPECIAL TOOLS)

**COMPRESSOR, AIR, RECIPROCATING,
ELECTRIC MOTOR DRIVEN,
RECEIVER MOUNTED, 2HP, 5CFM, 175PSI
INGERSOLL-RAND MODEL 234C2
FSN 4310-155-7101**

DISTRIBUTION STATEMENT A: Approved for public release; distribution is unlimited.

TM 5-4310-348-24P, 19 October 1973, is changed as follows:

Page v, paragraph 7, change mailing address to:

Commander
U.S. Army Aviation and Troop Command
ATTN: AMSAT-I-MP
4300 Goodfellow Boulevard
St. Louis, MO 63120-1798

Page 3, figure 12, item 20, change description to "ELBO, PIPE, 141621 (30379)".

Page 11, figure 12, item 20, change description to "ELBO, PIPE, 141621 (30379)".

By Order of the Secretary of the Army:

GORDON R. SULLIVAN
General, United States Army
Chief of Staff

Official:

MILTON H. HAMILTON
Administrative Assistant to the
Secretary of the Army
05186

DISTRIBUTION:

To be distributed in accordance with DA Form 12-25-E, block no. 0407, requirements
for TM 5-4310-348-24P.

ORGANIZATIONAL, DIRECT SUPPORT AND GENERAL
 SUPPORT MAINTENANCE REPAIR PARTS
 AND SPECIAL TOOLS LISTS (INCLUDING DEPOT
 MAINTENANCE REPAIR PARTS AND SPECIAL TOOLS)

**COMPRESSOR, AIR, RECIPROCATING,
 ELECTRIC MOTOR DRIVEN,
 RECEIVER MOUNTED, 2HP, 5CFM, 175PSI
 INGERSOLL-RAND MODEL 234C2
 FSN 4310-155-7101**

Current as of 20 August 1973

| | | Paragraph | Page |
|--------------|---|-----------------|----------------|
| Section I. | INTRODUCTION | | iii |
| II. | PRESCRIBED LOAD ALLOWANCE (NOT APPLICABLE) | | |
| III. | REPAIR PARTS FOR ORGANIZATIONAL MAINTENANCE | | 1 |
| | | Listing Page | Illus. Fig. |
| Group 01. | Belt Guard Assembly..... | 1 | 1 |
| 02. | Compressor Motor and Controls..... | 1 | |
| | Compressor motor..... | | 2 |
| 03. | Air Compressor..... | 1 | |
| | "V" Belts, aftercooler and intercooler..... | | 5 |
| | Bare air compressor | | 6 |
| | Pilot valve, centrifugal unloader and frame end cover | | 7 |
| | Inlet filter complete | | 8 |
| | L.P. Piston, cylinder and rod assembly..... | | 9 |
| 04. | Receiver, Check Valve, Service and Drain Line..... | 2 | 12 |
| Section IV. | SPECIAL TOOLS, TEST AND SUPPORT EQUIPMENT FOR ORGANIZATIONAL MAINTENANCE (NOT APPLICABLE) | | |
| V. | REPAIR PARTS FOR DIRECT SUPPORT, GENERAL SUPPORT AND DEPOT MAINTENANCE | 4 | |
| Group 01. | Belt Guard Assembly..... | 4 | 1 |
| 02. | Compressor Motor and Controls..... | 4 | |
| | Compressor motor..... | | 2 |
| | Starter and selector switch complete..... | | 3 |
| | Pressure switch | | 4 |
| 03. | Air Compressor..... | 6 | |
| | "V" Belt, after cooler and intercooler..... | | 5 |
| | Bare air compressor | | 6 |
| | Pilot valve, centrifugal unloader and frame end cover | | 7 |
| | Inlet filter complete | | 8 |
| | L. P. piston, cylinder and rod assembly..... | | 9 |
| | H. P. piston, cylinder and rod assembly..... | | 10 |
| | Frame, crankshaft and oil seal..... | | 11 |
| 04. | Receiver, Check Valve, Service and Drain Line..... | 10 | 12 |
| Section VI. | SPECIAL TOOLS, TEST AND SUPPORT EQUIPMENT FOR DIRECT SUPPORT, GENERAL SUPPORT AND DEPOT MAINTENANCE (NOT APPLICABLE) | | |
| Section VII. | FEDERAL STOCK NUMBER AND REFERENCE NUMBER INDEX..... | 25 | |

**SECTION I.
INTRODUCTION**

1. Scope

a. This manual lists repair parts, special tools, test and support equipment required for the performance of organizational, direct support, general support, and depot maintenance of the air compressor.

b. Repair parts listed represent those authorized for use at indicated maintenance levels and will be requisitioned on an "as required" basis until stockage is justified by demand in accordance with AR 710-2.

2. General

This Repair Parts and Special Tools List is divided into the following sections:

a. *Prescribed Load Allowance List-Section II.* (Not Applicable)

b. *Repair Parts List-Section III.* A list of repair parts authorized at the organizational level for the performance of maintenance. The list also includes parts which must be removed for replacement of the authorized parts. Parts lists are composed of assembly groups in ascending numerical sequence, with the parts in each group listed in figure and item number sequence.

c. *Special Tools, Test and Support Equipment-Section IV.* A list of special tools, test and support equipment authorized for the performance of maintenance at the organizational level. ("Not Applicable").

d. *Repair Parts List-Section V.* A list of repair parts authorized at the direct support, general support, and depot levels for the performance of maintenance. The list also includes parts which must be removed for the replacement of the authorized parts. Parts lists are composed of assembly groups in ascending numerical sequence, with parts in each group listed in figure and item number sequence.

e. *Special Tools, Test and Support Equipment-Section VI.* A list of special tools, test and support equipment authorized for the performance of maintenance at the direct support, general support, and depot levels. (Not Applicable).

f. *Federal Stock Number and Reference Number Index-Section VII.* A list, in ascending numerical sequence, of all Federal stock numbers appearing in the listings, followed by a list, in alpha-numeric sequence, of all reference numbers appearing in the listings. Federal stock number and reference numbers are cross-referenced to each illustration figure and/or item number appearance.

3. Explanation of Columns

The following provides an explanation of columns found in the tabulated listings in Sections III through VII.

a. *Source, Maintenance, and Recoverability Codes (SMR).* The SMR code is a five letter code composed of three parts consisting of a two (2) position source code, a two (2) position maintenance code, and a one (1) position recoverability code. Support items listed in this RPSTL assigned maintenance and recoverability codes and no source code can be requisitioned, with justification, through normal supply channels by use of the manufacturer's code and part number. Such support items are NOT normally stocked.

(1) *Source code.* Indicates the manner of acquiring support items for maintenance, repair, or overhaul of end items. Source codes are entered in the first and second positions as follows:

| <i>Code</i> | <i>Definition</i> |
|-------------|---|
| PA | Item procured and stocked for anticipated or known usage. |
| PB | Item procured and stocked for insurance purposes because essentiality dictates that a minimum quantity be available in the supply system. |
| PC | Item procured and stocked and which otherwise would be coded PA except that it is deteriorative in nature. |
| PD | Support item, excluding support equipment, procured for initial issue or outfitting and stocked only for subsequent or additional initial issues or outfittings. NOT subject to automatic replenishment. |
| PE | Support equipment procured and stocked for initial issue or outfitting to specified maintenance repair activities. |
| PF | Support equipment which will not be stocked but which will be centrally procured on demand. |
| PG | Item procured and stocked to provide for sustained support for life of the equipment. It is applied to an item peculiar to the equipment which, because of probable discontinuance or shutdown of production facilities, would prove uneconomical to reproduce at a later date. |
| KD | An item of depot overhaul/repair kit and not purchased separately. |
| KF | An item of a maintenance kit and not purchased separately. |
| KB | Item included in both a depot overhaul/repair kit and a maintenance kit. |
| MO | Item to be manufactured or fabricated at organizational level. |
| MF | Item to be manufactured or fabricated at direct support maintenance level. |
| MH | Item to be manufactured or fabricated at general maintenance support level. |
| MD | Item to be manufactured or fabricated at depot maintenance level. |

| Code | Definition |
|------|--|
| AO | Item to be assembled at organizational level. |
| AF | Item to be assembled at direct support maintenance level. |
| AH | Item to be assembled at general support maintenance level. |
| AD | Item to be assembled at depot maintenance level. |
| XA | Item is NOT procured or stocked because the requirements for the item will result in replacement of the next higher assembly. |
| XB | Item NOT procured or stocked. If not available through field service drawing that is identified by manufacturer's part number. |
| XD | A low mortality item that is not stocked. When required, items will be requested and provided through normal supply channels. |

NOTE

Cannibalization or salvage may be used as a source of supply for any items coded above except those coded XA and support items restricted by AR 700-42.

(2) *Maintenance code.* The maintenance code entered in the *third* position indicates the lowest maintenance level authorized to remove, replace, and use the item. The maintenance code entered in the *fourth* position indicates whether the item is to be repaired and identifies the lowest maintenance level with the capability to perform complete repair (i.e., all authorized maintenance functions). When a maintenance code is not used in the *fourth* position, a dash (-) will be entered.

| Code | Application/Explanation |
|------|---|
| O | Item is removed, replaced, used (third position), or complete repair (fourth position) at the organizational level. |
| F | Item is removed, replaced, used (third position), or complete repair (fourth position) at the direct support maintenance level. |
| H | Item is removed, replaced, used (third position) or complete repair (fourth position) at the general support maintenance level. |
| D | Item is removed, replaced, used (third position) or complete repair (fourth position) at the depot maintenance level. |
| L | Repair restricted to designated specialized repair activity (fourth position). |
| Z | Non-repairable. No repairs authorized (fourth position). |
| B | No repair is authorized. The item may be reconditioned by adjusting, lubricating, etc., at the user level. No parts or special tools are procured for maintenance of this item (fourth position). |

(3) *Recoverability code.* The recoverability code entered in the fifth position indicates the disposition action on unserviceable items.

| Code | Application/Explanation |
|------|--|
| Z | Non-repairable item. When unserviceable, condemn and dispose at the level indicated in position three (3). |
| O | Repairable item. When uneconomically repairable, condemn and dispose at organizational level. |
| F | Repairable item. When uneconomically repairable, condemn and dispose at direct support level. |
| H | Repairable item. When uneconomically repairable, condemn and dispose at general support level. |
| D | Repairable item. When beyond lower level repair capability, return to depot. Condemnation and disposal not authorized below depot level. |
| L | Repairable item. Repair, condemnation, and disposal not authorized below depot/specialized repair activity level. |
| A | Item requires special handling or condemnation procedures because of specific reasons (i.e., precious metal content, high dollar value, critical material, or hazardous material). |

b. Federal Stock Number. Indicates the Federal stock number assigned to the item and will be used for requisitioning purposes.

c. Description. Indicates the Federal item name and a minimum description required to identify the item. The last line indicates the reference number followed by the applicable Federal Supply Code for Manufacturer (FSCM) in parentheses. The FSCM is used as an element in item identification to designate manufacturer of distributor or Government agency, etc., and is identified in SB 708-42. Items that are included in-kits and sets are listed below the name of the kit or set with quantity of each item in the kit or set indicated in front of the item name.

d. Unit of Measure (U/M). Indicates the standard or basic quantity by which the listed item is used in performing the actual maintenance function. This measure is expressed by a two-character alphabetical abbreviation, e.g., ea, in, etc., and is the basis used to indicate quantities and allowances in subsequent columns.

e. Quantity Incorporated in Unit. Indicates the quantity of the item used in the breakout shown on the illustration figure, which is prepared for an assembly group or an assembly. A "V" appearing in this column in lieu of a quantity indicates that no specific quantity is applicable, e.g., shims, spacers, etc.

f. Fifteen-Day Organizational Maintenance Allowances. Items authorized for u-se as required but not for initial stockage are identified with an asterisk in the allowance column.

g. Thirty-Day DS/GS Maintenance Allowance. Items authorized for use as required but not for initial stockage are identified with an asterisk in the allowance column.

h. One-Year Allowances Per 100 Equipment/Contingency Planning Purposes. Items authorized for use as required but not for initial stockage are identified with an asterisk in the allowance columns.

i. Depot Maintenance Allowance Per 100 Equipment. Items authorized for use as required but not for initial stockage are identified with an asterisk in the allowance column.

j. Illustration. This column is divided as follows:

(1) *Figure number.* Indicates the figure number of the illustration on which the item is shown.

(2) *Item number.* Indicates the callout number used to reference the item on the illustration.

4. Special Information

a. The basis of issue for authorized special tools, test and support equipment is the number of end items of equipment supported and the number of maintenance personnel allocated to perform the required maintenance operations.

b. Parts which require manufacture or assembly of a maintenance level higher than that authorized for installation will indicate in the source column the higher maintenance level.

c. Repair parts kits and gasket sets appear as the last entries in the repair parts listing for the group or assembly to which they apply.

d. (Applicable to revision and/or change only). Action change codes indicated in the left-hand margin of the listing page denote the following:

N-Indicates an added item.

C-Indicates a change in data.

R-Indicates a change in FSN only.

e. The following publications pertain to the air compressor and its components:

TM 5-4310-348-14 Operator, Organizational, Direct and General Support and Depot Maintenance Manual

L05-4310-348-12 Lubrication Order

5. How to Locate Repair Parts

a. When Federal stock number or reference number is unknown:

(1) *First.* Using the table of contents, determine the assembly group within which the repair part belongs. This is necessary since illustrations are prepared for assembly groups, and listings are divided into the same groups.

(2) *Second.* Find the illustration covering the assembly group to which the repair part belongs.

(3) *Third.* Identify the repair part on the illustration and note the illustration figure and item number of the repair part.

(4) *Fourth.* Using the Repair Parts Listing, find the assembly group to which the repair part belongs and locate the illustration figure and item number noted on the illustration.

b. When the Federal stock number or reference number is known:

(1) *First.* Using the Index of Federal Stock Numbers and Reference Numbers find the pertinent Federal stock number or reference number. This index is in ascending FSN sequence followed by a list of reference numbers in alpha-numeric sequence, cross-referenced to the illustration figure number and item number.

(2) *Second.* Using the Repair Parts Listing, find the assembly group of the repair part and the illustration figure number and item number referenced in the Index of Federal Stock Numbers and Reference Numbers.

6. Abbreviations

- ea..... each
- hd..... head
- hex..... hexagon
- hp..... high pressure
- lp..... low pressure
- mtg..... mounting

7. Recommendations for Maintenance Publications Improvements

You can improve this manual by calling attention to errors and by recommending improvements, using DA Form 2028 (Recommended Changes to Publications) or by a letter, and mailing directly to Commander, U.S. Army Troop Support Command, ATTN: AMSTS-MPP, 4300 Goodfellow Boulevard, St. Louis, Missouri 63120. A reply will be furnished directly to you.

| (1) SMR CODE | (2) FEDERAL STOCK NUMBER | (3) DESCRIPTION USABLE ON CODE REF NUMBER & MFR CODE | (4) UNIT OF MEAS | (5) QTY INC IN UNIT | (6) 15-DAY ORGANIZATIONAL MAINTENANCE ALW | | | | (7) ILLUS- TRATION | |
|--------------------|-----------------------------------|---|---------------------------|---------------------------------|---|------|-------|--------|--------------------------|-------------|
| | | | | | (a) | (b) | (c) | (d) | (a) | (b) |
| | | | | | 1-5 | 6-20 | 21-50 | 51-100 | FIG NO. | ITEM NO. |
| | | SECTION III - REPAIR PARTS FOR ORGANIZATIONAL MAINTENANCE | | | | | | | | |
| XBOZZ | | GROUP 01 - BELT GUARD ASSEMBLY BELT GUARD ASSEMBLY 3W75478T6E (51436) | EA | 1 | | | | | 1 | 1 |
| PAOZZ | 5305-269-3206 | SCREW, CAP: BRACE MTG MS90725-55 (96906) | EA | 1 | * | * | * | * | 1 | 2 |
| PAOZZ | 5310-637-9541 | WASHER, LOCK: BRACE MTG MS35338-40 (96906) | EA | 1 | * | * | * | * | 1 | 3 |
| PAOZZ | 5310-080-6004 | WASHER, LOCK MS27183-14 (96906) | EA | 1 | * | * | * | * | 1 | 4 |
| XBOZZ | | BRACE: GUARD MTG 3W75424T3 (51436) | EA | 1 | | | | | 1 | 5 |
| PAOZZ | | SCREW, THREAD FORMING W99597T12 (51436) | EA | 2 | * | * | * | * | 1 | 6 |
| PAOZZ | | SCREW, CAP: GUARD MTG 35A2C130 (51436) | EA | 2 | * | * | * | * | 1 | 7 |
| PAOZZ | 5310-637-9541 | WASHER, LOCK: GUARD MTG MS35338-40 (96906) | EA | 2 | | * | * | * | 1 | 8 |
| PAOZZ | 5310-080-6004 | WASHER, LOCK MS27183-14 (96906) | EA | 2 | * | * | * | * | 1 | 9 |
| XBOZZ | | SPACER 3W75479T4 (51436) | EA | 2 | | | | | 1 | 10 |
| XBOZZ | | SPACER 3W75479T13 (51436) | EA | 3 | | | | | 1 | 11 |
| XBOZZ | | GUARD, BELT 3W39875 (51436) | EA | 1 | | | | | 1 | 12 |
| PAOZZ | 5305-269-3214 | SCREW, CAP MS90725-64 (96906) | EA | 1 | * | * | * | * | 1 | 13 |
| PAOZZ | 5310-637-9541 | WASHER, LOCK MS35338-40 (96906) | EA | 1 | | | | | 1 | 14 |
| XBOZZ | | GUARD, BELT BACK 3H12718 (51436) | EA | 1 | | | | | 1 | 15 |
| XBOZZ | | PLATE, INSTRUCTION W111042 (51436) | EA | | 1 | | | | 1 | 16 |
| XBOZZ | | PLATE, IDENTIFICATION W111040 (51436) | EA | 1 | | | | | 1 | 17 |
| XBOZZ | | ARROW, DIRECTION 3W45928 (51436) | EA | 1 | | | | | 1 | 18 |
| | | GROUP 02-COMPRESSOR MOTOR AND CONTROLS | | | | | | | | |
| XBOZZ | | SET, SCREW 109A290 (51436) | EA | 1 | | | | | 2 | 1 |
| PBOLH | | MOTOR COMPLETE 182TCDR7072 (38151) | EA | 1 | * | * | * | * | 2 | 3 |
| | | GROUP 03-AIR COMPRESSOR | | | | | | | | |
| PAOZZ | 3030-278-1670 | BELTS, "V":MATCHED SET MS39255-2A68 (96906) | EA | 1 | * | * | * | * | 5 | 1 |
| PAOZZ | 5310-768-0318 | NUT MS51967-14 (96906) | EA | 1 | * | * | * | * | 5 | 2 |
| PAOZZ | 5310-584-5272 | WASHER, LOCK MS35338-10 (96906) | EA | 1 | * | * | * | * | 5 | 3 |

| (1) SMR CODE | (2) FEDERAL STOCK NUMBER | (3) DESCRIPTION USABLE ON CODE REF NUMBER & MFR CODE | (4) UNIT OF MEAS | (5) QTY INC IN UNIT | (6) 15-DAY ORGANIZATIONAL MAINTENANCE ALW | | | | (7) ILLUS- TRATION | |
|--------------------|-----------------------------------|---|---------------------------|---------------------------------|---|------|-------|--------|--------------------------|-------------|
| | | | | | (a) | (b) | (c) | (d) | (a) | (b) |
| | | | | | 1-5 | 6-20 | 21-50 | 51-100 | FIG NO. | ITEM NO. |
| PAOZZ | 5310-045-3299 | WASHER, LOCK INTERNAL MS35338-42 (96906) | EA | 2 | * | * | * | * | 5 | 7 |
| XBOZZ | | TUBE, INTERCOOLER X1434T71 (51436) | EA | 1 | | | | | 5 | 12 |
| XBOZZ | | PLUG, PIPE 30A7M3 (51436) | EA | 1 | | | | | 5 | 13 |
| XBOZZ | | ELBOW, TUBE W11282 (51436) | EA | 1 | | | | | 5 | 14 |
| XBOZZ | | ELBOW, TUBE X15061E12 (51436) | EA | 1 | | | | | 5 | 15 |
| PBOZZ | 4310-255-0434 | COMPRESSOR, BARE L49780 (51436) | EA | 1 | * | * | * | * | 6 | 1 |
| PAOZZ | 5305-782-9495 | SCREW, CAP MS90725-11 (96906) | EA | 4 | * | * | * | * | 6 | 2 |
| PAOZZ | 310-584-5272 | WASHER, LOCK MS35338-48 (96906) | EA | 4 | * | * | * | * | 6 | 3 |
| XBOZZ | | SUPPORT, HOSE R53550 (51436) | EA | 1 | | | | | 6 | 4 |
| PAOZZ | 5306-225-8497 | CREW, CAP MS90725-32 (96906) | EA | 5 | * | * | * | * | 7 | 11 |
| XBOZZ | | WASHER, STEEL X1016T33 (51436) | EA | 6 | | | | | 7 | 12 |
| PAOZZ | 5305-225-9081 | SCREW, CAP 35A2C60 (51436) | EA | 1 | * | * | * | * | 7 | 13 |
| XBOZZ | | COVER, FRAME END COMPLETE 3W75292T100 (51436) | EA | 1 | | | | | 7 | 14 |
| XBOZZ | | COVER, FRAME END 3H26670 (51436) | EA | 1 | | | | | 7 | 15 |
| XBOZZ | | PLUG, OIL FILLER COMPLETE 3W75294T10 (51436) | EA | 1 | | | | | 7 | 17 |
| XBOZZ | | PLUG 3W82 (51436) | EA | 1 | | | | | 7 | 18 |
| XBOZZ | | PLATE, NAME 7A16X184 (51436) | EA | 1 | | | | | 7 | 21 |
| XBOZZ | | FILTER, COMPLETE 3W75278T40 (51436) | EA | 1 | | | | | 8 | 1 |
| XBOZZ | | BODY 3W11558 (51436) | EA | 1 | | | | | 8 | 2 |
| XBOZZ | | DISC 3W60504 (51436) | EA | 2 | | | | | 8 | 3 |
| PAOZZ | 4310-253-0871 | PAD 3W60506 (51436) | EA | 4 | * | * | * | * | 8 | 4 |
| XBOZZ | | DECAL 3W75251 (51436) | EA | 1 | | | | | 8 | 5 |
| XBOZZ | | NIPPLE 18A7W5 (51436) | EA | 1 | | | | | 8 | 6 |
| PAOZZ | 5305-001-5115 | SCREW, CAP 35A2C115 (51436) | EA | 4 | * | * | * | * | 9 | 1 |
| | | GROUP 04 - RECEIVER, CHECK VALVE, SERVICE AND DRAIN LINE | | | | | | | | |
| XAOZZ | | NIPPLE, HOSE ADAPTER W114007 (51436) | EA | 1 | | | | | 2 | 9 |
| PAOZZ | | HOSE ASSEMBLY 3W95993 (51436) | EA | 1 | * | * | * | * | 12 | 10 |

| (1) SMR CODE | (2) FEDERAL STOCK NUMBER | (3) DESCRIPTION REF NUMBER & MFR CODE | (4) USABLE ON CODE | (5) UNIT OF MEAS | (6) 15-DAY ORGANIZATIONAL MAINTENANCE ALW | | | | (7) ILLUS- TRATION | | |
|--------------------|-----------------------------------|---|-----------------------------|---------------------------|---|------|-------|--------|--------------------------|-------------|----|
| | | | | | (a) | (b) | (c) | (d) | (a) | (b) | |
| | | | | | 1-5 | 6-20 | 21-50 | 51-100 | FIG NO. | ITEM NO. | |
| PAOZZ | 4910-204-2644 | DEVICE INFLATION 3W95994 (51436) | | EA | 1 | * | * | * | | 12 | 11 |
| XAOZZ | | SERVICE LINE ASSEMBLY 3W75407T3 (51436) | | EA | 1 | | | | | 12 | 12 |
| XAOZZ | | NIPPLE PIPE 18A7W5 (51436) | | EA | 1 | | | | | 12 | 13 |
| XAOZZ | | VALVE, GLOBE W75410T2 (51436) | | EA | 1 | | | | | 12 | 14 |
| XAOZZ | | NIPPLE, CLOSE 18A7W4 (51436) | | EA | 1 | | | | | 12 | 15 |
| XAOZZ | | BUSHING, REDUCING 23A7M5 (51436) | | EA | 1 | | | | | 12 | 16 |
| XAOZZ | | TEE, REDUCING 74A7M18 (51436) | | EA | 1 | | | | | 12 | 17 |
| PAOZZ | 4820-244-0365 | VALVE, SAFETY X1396T28-210 (51436) | | EA | 1 | * | * | * | * | 12 | 18 |
| PAOZZ | 4820-244-0413 | VALVE, DRAIN W99807 (51436) | | EA | 1 | * | * | * | * | 12 | 19 |
| XBOZZ | | ELBOW, STREET 67A7M2 (51436) | | EA | 1 | | | | | 12 | 20 |
| XBOZZ | | GAUGE, PRESSURE 3A12N37 (51436) | | EA | 1 | | | | | 12 | 21 |
| PAOZZ | 5310-582-5965 | WASHER, LOCK 14A5C55 (51436) | | EA | 3 | * | * | * | * | 12 | 24 |
| PAOZZ | 5305-269-3219 | SCREW, CAP 35A2C120 (51436) | | EA | 2 | * | * | * | * | 12 | 25 |
| PAOZZ | 5310-637-9541 | WASHER, LOCK 14A5C76 (51436) | | EA | 2 | * | * | * | * | 12 | 26 |
| XBOZZ | | BRACKET, STARTER W90511 (51436) | | EA | 1 | | | | | 12 | 27 |
| XBOZZ | | SPACER, BRACKET 3W75479T15 (51436) | | EA | 2 | | | | | 12 | 28 |
| XBOZZ | | TIGHTENER, BELT ASSEMBLY 3W75539T9 (51436) | | EA | 1 | | | | | 12 | 29 |
| PAOZZ | 5310-880-7744 | NUT MS51967-5 (96906) | | EA | 4 | * | * | * | * | 12 | 30 |
| PAOZZ | 5310-407-9566 | WASHER, LOCK MS35338-45 (96906) | | EA | 4 | * | * | * | * | 12 | 31 |
| PAOZZ | 5305-225-9081 | SCREW, CAP 35A2C60 (51436) | | EA | 3 | * | * | * | * | 12 | 32 |
| PAOZZ | 5310-768-0318 | NUT, TIGHTENER 16A4C5 (51436) | | EA | 1 | * | * | * | | 12 | 33 |
| XBOZZ | | CLIP, TIGHTENER 3W11261 (51436) | | EA | 1 | | | | | 12 | 34 |
| XBOZZ | | TIGHTENER, BELT X1429TX520X6 (51436) | | EA | 1 | | | | | 12 | 35 |
| XBOZZ | | TUBE, BLOCK GAUGE 3W75211T5 (51436) | | EA | 1 | | | | | 12 | 36 |
| XBOZZ | | CONNECTOR, TUBE X1506IC5X4 (51436) | | EA | 1 | | | | | 12 | 37 |
| XBOZZ | | ELBOW, TUBE X1506IE5 (51436) | | EA | 1 | | | | | 12 | 38 |

| (1) SMR CODE | (2) FEDERAL STOCK NUMBER | (3) DESCRIPTION USABLE ON CODE REFERENCE NUMBER & MFR CODE | (4) UNIT OF MEAS | (5) QTY INC IN UNIT | (6) 30 DAYS DS MAINT ALLOWANCE | | | (7) 30 DAYS GS MAINT ALLOWANCE | | | (8) 1-YEAR ALW PER 100 EQUIP CNTGCV | (9) DEPOT MAINT ALW PER 100 EQUIP | (10) ILLUSTRATION | |
|--------------------|-----------------------------------|--|---------------------------|---------------------------------|---|-------|--------|---|-------|--------|---|---|----------------------|--------------------|
| | | | | | (a) | (b) | (c) | (a) | (b) | (c) | | | (a) FIGURE NO. | (b) ITEM NO. |
| | | | | | 1-20 | 21-50 | 51-100 | 1-20 | 21-50 | 51-100 | | | | |
| | | SECTION V - REPAIR PARTS FOR DS, GS AND DEPOT MAINTENANCE | | | | | | | | | | | | |
| XBOZF | | GROUP 01 - BELT GUARD ASSEMBLY BELT GUARD ASSEMBLY 3W75478T6E (51436) | EA | 1 | | | | | | | | | 1 | 1 |
| PAOZF | 5305-269-3214 | SCREW, CAP MS90725-64 (96906) | EA | 1 | * | * | * | * | * | * | * | * | 1 | 2 |
| PAOZF | 5310-637-9541 | WASHER, LOCK MS35338-46 (96906) | EA | 1 | * | * | * | * | * | * | * | * | 1 | 3 |
| PAOZZ | 5310-080-6004 | WASHER, FLAT MS27183-4 (96906) | EA | 1 | * | * | * | * | * | * | * | * | 1 | 4 |
| XBOZZ | | BRACE 3W75424T3 (51436) | EA | 1 | | | | | | | | | 1 | 5 |
| XBOZZ | | SCREW, THREAD FORMING W99597T12 (51436) | EA | 2 | | | | | | | | | 1 | 6 |
| XBOZZ | | SCREW, CAP 35A2C130 (51436) | EA | 2 | | | | | | | | | 1 | 7 |
| PAOZZ | 5310-637-9541 | WASHER, LOCK 14A5C76 (51436) | EA | 2 | * | * | * | * | * | * | * | * | 1 | 8 |
| PAOZZ | 5310-080-6004 | WASHER, FLAT 12A5C4 (51436) | EA | 2 | * | * | * | * | * | * | * | * | 1 | 9 |
| XAOZZ | | SPACER 3W75479T4 (51436) | EA | 2 | | | | | | | | | 1 | 10 |
| XAOZZ | | SPACER 3W75479T13 (51436) | EA | 3 | | | | | | | | | 1 | 11 |
| | | 3W39875 (51436) | EA | 1 | | | | | | | | | 1 | 12 |
| PAOZZ | 5305-001-5115 | SCREW, CAP 35A2C115 (51436) | EA | 1 | * | * | * | * | * | * | * | * | 1 | 13 |
| PAOZZ | 5310-637-9541 | WASHER, LOCK 14A5C76 (51436) | EA | 1 | * | * | * | * | * | * | * | * | 1 | 14 |
| XBOZZ | | GUARD, BELT BACK 3H12718 (51436) | EA | 1 | | | | | | | | | 1 | 15 |
| XBOZZ | | PLATE, INSTRUCTION W111042 (51436) | EA | 1 | | | | | | | | | 1 | 16 |
| XBOZZ | | PLATE, IDENTIFICATION W111040 (51436) | EA | 1 | | | | | | | | | 1 | 17 |
| XBOZZ | | ARROW, DIRECTION 3W45928 (51436) | EA | 1 | | | | | | | | | 1 | 18 |
| | | GROUP 02 - COMPRESSOR MOTOR AND CONTROLS | | | | | | | | | | | | |
| PAFZZ | | SCREW, SET 109A290 (51436) | EA | 1 | * | * | * | * | * | * | * | * | 2 | 1 |
| XBFZZ | | PULLEY, MOTOR 3H12422-2A487-112 (51436) | EA | 1 | | | | | | | | | 2 | 2 |
| PBOLH | | MOTOR COMPLETE 182TCDR7072 (38151) | EA | 1 | * | * | * | * | * | * | * | * | 2 | 3 |
| XBFZZ | | KEY, MOTOR 91385088 (38151) | EA | 1 | | | | | | | | | 2 | 4 |
| XBFZZ | | NUT 9186271-4 (38151) | EA | 2 | | | | | | | | | 2 | 5 |
| XBFZZ | | STUD 9120796-7 (38151) | EA | 4 | | | | | | | | | 2 | 6 |

| (1) SMR CODE | (2) FEDERAL STOCK NUMBER | (3) DESCRIPTION USABLE ON CODE REFERENCE NUMBER & MFR CODE | (4) UNIT OF MEAS | (5) QTY INC IN UNIT | (6) 30 DAYS DS MAINT ALLOWANCE | | | (7) 30 DAYS GS MAINT ALLOWANCE | | | (8) 1-YEAR ALW PER 100 EQUIP CNTGCTY | (9) DEPOT MAINT ALW PER 100 EQUIP | (10) ILLUSTRATION | |
|--------------------|-----------------------------------|--|---------------------------|---------------------------------|---|-------|--------|---|-------|--------|--|---|----------------------|--------------------|
| | | | | | (a) | (b) | (c) | (a) | (b) | (c) | | | (a) FIGURE NO. | (b) ITEM NO. |
| | | | | | 1-20 | 21-50 | 51-100 | 1-20 | 21-50 | 51-100 | | | | |
| XBFZZ | | STUD 9120796-7 (38151) | EA | 4 | | | | | | | | | 2 | 6 |
| XBFZZ | | BRACKET, REAR 6102259-6 (38151) | EA | 1 | | | | | | | | | 2 | 7 |
| XBFZZ | | BAFFLE, REAR 9222490-6 (38151) | EA | 1 | | | | | | | | | 2 | 8 |
| XBFZZ | | BALL BEARING, REAR 911177-7 (38151) | EA | 1 | | | | | | | | | 2 | 9 |
| XBFZZ | | ROTOR ASSEMBLY 5022519-2 (38151) | EA | 1 | | | | | | | | | 2 | 10 |
| XBFZZ | | FAN, MOTOR 9241290-7 (38151) | EA | 1 | | | | | | | | | 2 | 11 |
| XBFZZ | | DEVICE, CENTRIFUGAL 5900054-7 (38151) | EA | 1 | | | | | | | | | 2 | 12 |
| XBFZZ | | BRACKET, FRONT 6102608-4 (38151) | EA | 1 | | | | | | | | | 2 | 13 |
| XBFZZ | | BAFFLE, FRONT 9222510-1 (38151) | EA | 1 | | | | | | | | | 2 | 14 |
| PAFZZ | | ASSEMBLY STATIONARY SWITCH 6200019-5 (38151) | EA | 1 | * | * | * | * | * | * | * | * | 2 | 15 |
| XBFZZ | | BALL BEARING, FRONT 9111771-3 (38151) | EA | 1 | | | | | | | | | 2 | 16 |
| XBFZZ | | SCREW 9185582-5 (38151) | EA | 4 | | | | | | | | | 2 | 17 |
| XBFZZ | | COVER, CONDUIT BOX 9222640-6 (38151) | EA | 1 | | | | | | | | | 2 | 18 |
| PAFZZ | | CAPACITORS 9115630-7 (38151) | EA | 2 | * | * | * | * | * | * | * | * | 2 | 19 |
| XBFZZ | | SCREW 9185462-0 (38151) | EA | 2 | | | | | | | | | 2 | 20 |
| XBFZZ | | GASKET 9137316-7 (38151) | EA | 1 | | | | | | | | | 2 | 21 |
| XBFZZ | | BASE, CONDUIT BOX 9168160-1 (38151) | EA | 1 | | | | | | | | | 2 | 22 |
| XAFZZ | | STATOR BODY ASSEMBLY 4024252-1 (38151) | EA | 1 | | | | | | | | | 2 | 23 |
| PBFZZ | | STARTER, COMPLETE T13AK21-76 (12584) | EA | 1 | * | * | * | * | * | * | * | * | 3 | 1 |
| XBFZZ | | KIT, ENCLOSURE ETMO12-1 (12584) | EA | 1 | | | | | | | | | 3 | 2 |
| XBFZZ | | SCREW, MOUNTING T147-8 (12584) | EA | 1 | | | | | | | | | 3 | 3 |
| PBFZZ | | STARTER, OPEN T13U021-76 (12584) | EA | 1 | * | * | * | * | * | * | * | * | 3 | 4 |
| PAFZZ | | ELEMENT, HEATER 2452 (12584) | EA | 1 | * | * | * | * | * | * | * | * | 3 | 5 |
| XBFZZ | | KIT, SELECTOR SWITCH KTM7 (12584) | EA | 1 | | | | | | | | | 3 | 6 |
| PBFZZ | 5930-238-6932 | SWITCH, PRESSURE 830-C5900 (01121) | EA | 1 | * | * | * | * | * | * | * | * | 4 | 1 |

| (1) SMR CODE | (2) FEDERAL STOCK NUMBER | (3) DESCRIPTION USABLE ON CODE REFERENCE NUMBER & MFR CODE | (4) UNIT OF MEAS | (5) QTY INC IN UNIT | (6) 30 DAYS DS MAINT ALLOWANCE | | | (7) 30 DAYS GS MAINT ALLOWANCE | | | (8) 1-YEAR ALW PER 100 EQUIP CNTGCTY | (9) DEPOT MAINT ALW PER 100 EQUIP | (10) ILLUSTRATION | |
|--------------------|-----------------------------------|--|---------------------------|---------------------------------|---|-------|--------|---|-------|--------|--|---|----------------------|--------------------|
| | | | | | (a) | (b) | (c) | (a) | (b) | (c) | | | (a) FIGURE NO. | (b) ITEM NO. |
| | | | | | 1-20 | 21-50 | 51-100 | 1-20 | 21-50 | 51-100 | | | | |
| | | GROUP 03 - AIR COMPRESSOR | | | | | | | | | | | | |
| PAOZZ | 3030-278-1670 | BELTS, "V" MS39255-2A68 (96906) | EA | 2 | * | * | * | * | * | * | * | * | 5 | 1 |
| PAOZZ | 5310-768-0318 | NUT MS51967-14 (96906) | EA | 1 | * | * | * | * | * | * | * | * | 5 | 2 |
| PAOZZ | 5310-584-5272 | WASHER, LOCK MS35338-40 (96906) | EA | 1 | * | * | * | * | * | * | * | * | 5 | 3 |
| PAOZZ | 5305-071-1774 | SCREW, CAP MS90725-121 (96906) | EA | 1 | * | * | * | * | * | * | * | * | 5 | 4 |
| XBFZZ | | WHEEL, V-BELT 3R8172 (51436) | EA | 1 | | | | | | | | | 5 | 5 |
| XBFZZ | | SCREW, CAP 83A2C69 (51436) | EA | 2 | | | | | | | | | 5 | 6 |
| PAOZZ | 5310-045-3299 | WASHER, LOCK INTERNAL MS35338-42 (96906) | EA | 2 | * | * | * | * | * | * | * | * | 5 | 7 |
| XBFZZ | | CLAMP, AFTERCOOLER CW-0805 (51436) | EA | 3 | | | | | | | | | 5 | 8 |
| XBFZZ | | BRACE, AFTERCOOLER R53561 (51436) | EA | 1 | | | | | | | | | 5 | 9 |
| XBFZZ | | AFTERCOOLER, AIR COOLED H36319 (51436) | EA | 1 | | | | | | | | | 5 | 10 |
| XBFZZ | | ELBOW, TUBE X1506IE8 (51436) | EA | 2 | | | | | | | | | 5 | 11 |
| XBOZZ | | TUBE, INTERCOOLER X1434T71 (51436) | EA | 1 | | | | | | | | | 5 | 12 |
| XBOZZ | | PLUG, PIPE 30A7M3 (51436) | EA | 1 | | | | | | | | | 5 | 13 |
| XBOZZ | | ELBOW, TUBE 3W11282 (51436) | EA | 1 | | | | | | | | | 5 | 14 |
| XBOZZ | | ELBOW, TUBE X1506IE12 (51436) | EA | 1 | | | | | | | | | 5 | 15 |
| PBOFH | 4310-255-0434 | COMPRESSOR, BARE L49780 (51436) | EA | 1 | * | * | * | * | * | * | * | * | 6 | 1 |
| PAOZZ | 5305-782-9495 | SCREW, CAP MS90725-11 (96906) | EA | 4 | * | * | * | * | * | * | * | * | 6 | 2 |
| PAOZZ | 5310-584-5272 | WASHER, LOCK MS35338-48 (96906) | EA | 4 | * | * | * | * | * | * | * | * | 6 | 3 |
| XBOZZ | | SUPPORT, HOSE R53550 (51436) | EA | 1 | | | | | | | | | 6 | 4 |
| XBFZZ | | TUBE, PILOT VALVE 3W75256T2 (51436) | EA | 1 | | | | | | | | | 7 | 1 |
| XBFZZ | | PILOT VALVE, COMPLETE 3W75289T100 (51436) | EA | 1 | | | | | | | | | 7 | 2 |
| XBFZZ | | ELBOW TUBE X1506IE5 (51436) | EA | 1 | | | | | | | | | 7 | 3 |
| XBFZZ | | SPRING X1091PP660 (51436) | EA | 1 | | | | | | | | | 7 | 4 |
| XBFZZ | | PLATE 3W58780 (51436) | EA | 1 | | | | | | | | | 7 | 5 |
| XBFZZ | | BODY 3W63625 (51436) | EA | 1 | | | | | | | | | 7 | 6 |
| XBFZZ | | NUT, LOCK 3W46062 (51436) | EA | 1 | | | | | | | | | 7 | 7 |

| (1) SMR CODE | (2) FEDERAL STOCK NUMBER | (3) DESCRIPTION USABLE ON CODE REFERENCE NUMBER & MFR CODE | (4) UNIT OF MEAS | (5) QTY INC IN UNIT | (6) 30 DAYS DS MAINT ALLOWANCE | | | (7) 30 DAYS GS MAINT ALLOWANCE | | | (8) 1-YEAR ALW PER 100 EQUIP CNTGCT | (9) DEPOT MAINT ALW PER 100 EQUIP | (10) ILLUSTRATION | |
|--------------------|-----------------------------------|--|---------------------------|---------------------------------|---|-------|--------|---|-------|--------|---|---|----------------------|--------------------|
| | | | | | (a) | (b) | (c) | (a) | (b) | (c) | | | (a) FIGURE NO. | (b) ITEM NO. |
| | | | | | 1-20 | 21-50 | 51-100 | 1-20 | 21-50 | 51-100 | | | | |
| XBFZZ | | SEAT 3W39900 (51436) | EA | 1 | | | | | | | | 7 | 8 | |
| XBFZZ | | PIN, THRUST 3W63623 (51436) | EA | 1 | | | | | | | | 7 | 9 | |
| KFFZZ | | O-RING 20A11CM006 (51436) | EA | 1 | SEE SET 4310-611-7184 | | | | | | | 7 | 10 | |
| PAOZZ | 5306-225-8497 | SCREW, CAP MS90725-32 (96906) | EA | 5 | * | * | * | * | * | * | * | 7 | 11 | |
| XBOZZ | | WASHER, STEEL X1016T33 (51436) | EA | 6 | | | | | | | | 7 | 12 | |
| PAOZZ | 5306-225-9081 | SCREW, CAP MS90725-36 (96906) | EA | 1 | * | * | * | * | * | * | * | 7 | 13 | |
| XBOZZ | | COVER, FRAME END, COMPLETE 3W75292T100 (51436) | EA | 1 | | | | | | | | 7 | 14 | |
| XBOZZ | | COVER, FRAME END 3H26670 (51436) | EA | 1 | | | | | | | | 7 | 15 | |
| KFFZZ | | GASKET 3R40620 (51436) | EA | 1 | SEE SET 4310-611-7184 | | | | | | 7 | 16 | | |
| XBOZZ | | PLUG, OIL FILLER, COMPLET 3W75294T100 (51436) | EA | 1 | | | | | | | | 7 | 17 | |
| XBOZZ | | PLUG 3W82 (51436) | EA | 1 | | | | | | | | 7 | 18 | |
| KFFZZ | | O-RING 20A11CM212 (51436) | EA | 1 | SEE SET 4310-611-7184 | | | | | | | 7 | 19 | |
| XDFZZ | | SCREW, DRIVE 3W34427 (51436) | EA | 1 | | | | | | | | 7 | 20 | |
| XBOZZ | | PLATE, NAME 7A16X184 (51436) | EA | 1 | | | | | | | | 7 | 21 | |
| XBFZZ | | CRANK, PIN CAP, COMPLETE 3W75288T20 (51436) | EA | 1 | | | | | | | | 7 | 22 | |
| XBFZZ | | PLUNGER 3W75306 (51436) | EA | 1 | | | | | | | | 7 | 23 | |
| XBFZZ | | SPRING X1091PP311 (51436) | EA | 1 | | | | | | | | 7 | 24 | |
| XBFZZ | | WIRE, LOCK 12X4 (51436) | EA | 1 | | | | | | | | 7 | 25 | |
| XBFZZ | | PIN 3W75303 (51436) | EA | 2 | | | | | | | | 7 | 26 | |
| XBFZZ | | WEIGHT 3W75307 (51436) | EA | 2 | | | | | | | | 7 | 27 | |
| PAFZZ | | SCREW, HEX SOCKET 91A2A146N (51436) | EA | 2 | * | * | * | * | * | * | * | 7 | 28 | |
| XBFZZ | | CAP, CRANK PIN 3W75310 (51436) | EA | 1 | | | | | | | | 7 | 29 | |
| XBOZZ | | FILTER, COMPLETE 3W75298T40 (51436) | EA | 1 | | | | | | | | 8 | 1 | |
| XBOZZ | | BODY 3W11558 (51436) | EA | 1 | | | | | | | | 8 | 2 | |
| XBOZZ | | DISC 3W60504 (51436) | EA | 2 | | | | | | | | 8 | 3 | |
| PAOZZ | 4310-253-0871 | PAD, MUFFLER, FILTER 3W60506 (51436) | EA | 1 | * | * | * | * | * | * | * | 8 | 4 | |
| XBOZZ | | DECAL 3W75251 (51436) | EA | 1 | | | | | | | | 8 | 5 | |

| (1) SMR CODE | (2) FEDERAL STOCK NUMBER | (3) DESCRIPTION USABLE ON CODE REFERENCE NUMBER & MFR CODE | (4) UNIT OF MEAS | (5) QTY INC IN UNIT | (6) 30 DAYS DS MAINT ALLOWANCE | | | (7) 30 DAYS GS MAINT ALLOWANCE | | | (8) 1-YEAR ALW PER 100 EQUIP CNTGCV | (9) DEPOT MAINT ALW PER 100 EQUIP | (10) ILLUSTRATION | |
|--------------------|-----------------------------------|--|---------------------------|---------------------------------|---|-------------------|-----------------------|---|-------|--------|---|---|----------------------|--------------------|
| | | | | | (a) | (b) | (c) | (a) | (b) | (c) | | | (a) FIGURE NO. | (b) ITEM NO. |
| | | | | | 1-20 | 21-50 | 51-100 | 1-20 | 21-50 | 51-100 | | | | |
| XBOZZ | | NIPPLE 18A7W5 (51436) | EA | 1 | | | | | | | | | 8 | 6 |
| PAOZZ | 5305-001-5115 | SCREW, CAP 35A2C115 (51436) | EA | 4 | * | * | * | * | * | * | * | * | 9 | 1 |
| XBOZZ | | AIR HEAD, COMPLETE 3W75302T30 (51436) | EA | 1 | | | | | | | | | 9 | 2 |
| KBFZZ | | AIR HEAD 3R4081 (51436) | EA | 1 | | | | | | | | | 9 | 3 |
| XFFZZ | | GASKET, AIR HEAD 3W6870 (51436) | EA | 1 | | | SEE SET 4310-611-7184 | | | | | | 9 | 4 |
| XBFZZ | | SPACER, VALVES, HD GASKET, COMPLETE 3W75299T30 (51436) | EA | 1 | | | | | | | | | 9 | 5 |
| XBFZZ | | SPACER AND VALVES, COMPLETE 3W75299T30X (51436) | EA | 1 | | | | | | | | | 9 | 6 |
| XBFZZ | | SPACER, COMPLETE 3W75299T305S (51436) | EA | 1 | | | | | | | | | 9 | 7 |
| XBFZZ | | SPACER 3W6866 (51436) | EA | 1 | | | | | | | | | 9 | 8 |
| KFFZZ | | GASKET 3W6869 (51436) | EA | 1 | | | SEE SET 4310-611-7184 | | | | | | 9 | 9 |
| PAFZZ | 5310-761-6882 | NUT MS51967-2 (96906) | EA | 4 | * | * | * | * | * | * | * | * | 9 | 10 |
| PAFZZ | 5310-582-5965 | WASHER, LOCK MS35338-44 (96906) | EA | 4 | * | * | * | * | * | * | * | * | 9 | 11 |
| PAFZZ | | SCREW, FILLISTER HEAD 87A2X144P (51436) | EA | 4 | * | * | * | * | * | * | * | * | 9 | 12 |
| XBFZZ | | VALVE W6874 (51436) | EA | 2 | | | | | | | | | 9 | 13 |
| PAFZZ | 5305-269-3210 | SCREW, CAP MS90725-59 (96906) | EA | 4 | * | * | * | * | * | * | * | * | 9 | 14 |
| XBFZZ | | WASHER, STEEL X1016T34 (51436) | EA | 4 | | | | | | | | | 9 | 15 |
| XBFZZ | | CYLINDER, COMPLETE 3W75296T50 (51436) | EA | 1 | | | | | | | | | 9 | 16 |
| XAFZZ | | CYLINDER 3R4080 (51436) | EA | 1 | | | | | | | | | 9 | 17 |
| KFFZZ | | GASKET 3W75330 (51436) | EA | 1 | SEE | SET 4310-611-7184 | | | | | | | 9 | 18 |
| PBFZZ | 4310-255-0435 | PISTON AND RINGS, COMPLETE 3W75295T20R (51436) | EA | 1 | * | * | * | * | * | * | * | * | 9 | 19 |
| XAFZZ | | PISTON, COMPLETE 3W75295T20 (51436) | EA | 1 | | | | | | | | | 9 | 20 |
| XBFZZ | | RING, LOCK 3W11859 (51436) | EA | 2 | | | | | | | | | 9 | 21 |
| XBFZZ | | PIN 3W11857 (51436) | EA | 1 | | | | | | | | | 9 | 22 |
| XAFZZ | | PISTON D36903 (51436) | EA | 1 | | | | | | | | | 9 | 23 |
| KFFZZ | | RING, COMPRESSION X1440T46B (51436) | EA | 2 | SEE | SET 4310-411-3848 | | | | | | | 9 | 24 |
| KFFZZ | | RING, OIL X1440T46M (51436) | EA | 1 | SEE | SET 4310-411-3848 | | | | 9 | 25 | | | |
| KFFZZ | | RING, OIL X1440T46H (51436) | EA | 1 | SEE | SET 4310-411-3848 | | | | | | | 9 | 26 |

| (1) SMR CODE | (2) FEDERAL STOCK NUMBER | (3) DESCRIPTION USABLE ON CODE REFERENCE NUMBER & MFR CODE | (4) UNIT OF MEAS | (5) QTY INC IN UNIT | (6) 30 DAYS DS MAINT ALLOWANCE | | | (7) 30 DAYS GS MAINT ALLOWANCE | | | (8) 1-YEAR ALW PER 100 EQUIP CNTGCV | (9) DEPOT MAINT ALW PER 100 EQUIP | (10) ILLUSTRATION | |
|--------------------|-----------------------------------|--|---------------------------|---------------------------------|---|-------|---------------|---|-------|--------|---|---|----------------------|--------------------|
| | | | | | (a) | (b) | (c) | (a) | (b) | (c) | | | (a) FIGURE NO. | (b) ITEM NO. |
| | | | | | 1-20 | 21-50 | 51-100 | 1-20 | 21-50 | 51-100 | | | | |
| KAFZZ | | ROD, CONNECTING 3R40639 (51436) | EA | 1 | | | | | | | | 9 | 27 | |
| KBFZZ | | CONNECTOR, TUBE 1506105 (51436) | EA | 1 | | | | | | | | 9 | 28 | |
| PAFZZ | 5305-001-5115 | SCREW, CAP 35A2C115 (51436) | EA | 4 | * | * | * | * | * | * | * | 10 | 1 | |
| KBFZZ | | AIR HEAD COMPLETE 3W75302T20 (51436) | EA | 1 | | | | | | | | 10 | 2 | |
| XAFZZ | | AIR HEAD 3W75319 (51436) | EA | 1 | | | | | | | | 10 | 3 | |
| KFFZZ | | GASKET 3W11477 (51436) | EA | 2 | SEE | SET | 4310-611-7184 | | | | | 10 | 4 | |
| XBFZZ | | SPACER, VALVES, HD, GASKET COMPLETE 3W75299T20 (51436) | EA | 1 | | | | | | | | 10 | 5 | |
| XBFZZ | | SPACER AND VALVE, COMPLETE 3W75299T20X (51436) | EA | 1 | | | | | | | | 10 | 6 | |
| XBFZZ | | SPACER, COMPLETE 3W75299T205S (51436) | EA | 1 | | | | | | | | 10 | 7 | |
| KFFZZ | | GASKET, SPACER 3W11478 (51436) | EA | 1 | SEE | SET | 4310-611-7184 | | | | | 10 | 8 | |
| XAFZZ | | SPACER 3W75317 (51436) | EA | 1 | | | | | | | | 10 | 9 | |
| XBFZZ | | VALVE, PLATE 3W75318 (51436) | EA | | | | | | | | | 10 | 10 | |
| PAFZZ | 5305-269-3210 | SCREW, CAP 35A2C110 (51436) | EA | 4 | * | * | * | * | * | * | * | 10 | 11 | |
| XBFZZ | | WASHER, STEEL X1016T34 (51436) | EA | 4 | | | | | | | | 10 | 12 | |
| XBFZZ | | CYLINDER, COMPLETE 3W75296T35 (51436) | EA | 1 | | | | | | | | 10 | 13 | |
| XAFZZ | | CYLINDER 3R4079 (51436) | EA | 1 | | | | | | | | 10 | 14 | |
| KFFZZ | | GASKET 3W75330 (51436) | EA | 1 | SEE | SET | 4310-611-7184 | | | | | 10 | 15 | |
| PBFZZ | 4310-255-0436 | PISTON AND RINGS, COMPLETE 3W75295T1OR (51436) | EA | 1 | * | * | * | * | * | * | * | 10 | 16 | |
| XAFZZ | | PISTON COMPLETE 3W75295T1O (51436) | EA | 1 | | | | | | | | 10 | 17 | |
| KBFZZ | | RING, LOCK 3W11859 (51436) | EA | 2 | | | | | | | | 10 | 18 | |
| XBFZZ | | PIN 3W11858 (51436) | EA | 1 | | | | | | | | 10 | 19 | |
| XAFZZ | | PISTON D36945 (51436) | EA | 1 | | | | | | | | 10 | 20 | |
| KFFZZ | | RING COMPRESSION X1440T28B (51436) | EA | 2 | SEE | SET | 4310-411-3848 | | | | | 10 | 21 | |
| KFFZZ | | RING, OIL X1440T28K (51436) | EA | 1 | SEE | SET | 4310-411-3848 | | | | | 10 | 22 | |
| KFFZZ | | RING, OIL X1440T28H (51436) | EA | 1 | SEE | SET | 4310-411-3848 | | | | | 10 | 23 | |
| XAFZZ | | ROD, CONNECTING 3R40639 (51436) | EA | 1 | | | | | | | | 10 | 24 | |
| XBFZZ | | CONNECTOR, TUBE X1506IC5 (51436) | EA | 1 | | | | | | | | 10 | 25 | |

| (1) SMR CODE | (2) FEDERAL STOCK NUMBER | (3) DESCRIPTION USABLE ON CODE REFERENCE NUMBER & MFR CODE | (4) UNIT OF MEAS | (5) QTY INC IN UNIT | (6) 30 DAYS DS MAINT ALLOWANCE | | | (7) 30 DAYS GS MAINT ALLOWANCE | | | (8) 1-YEAR ALW PER 100 EQUIP CNTGCV | (9) DEPOT MAINT ALW PER 100 EQUIP | (10) ILLUSTRATION | |
|--------------------|-----------------------------------|--|---------------------------|---------------------------------|---|-------|---------------|---|-------|--------|---|---|----------------------|--------------------|
| | | | | | (a) | (b) | (c) | (a) | (b) | (c) | | | (a) FIGURE NO. | (b) ITEM NO. |
| | | | | | 1-20 | 21-50 | 51-100 | 1-20 | 21-50 | 51-100 | | | | |
| XBFZZ | | CRANKSHAFT, COMPLETE 3W75291T20 (51436) | EA | 1 | | | | | | | | | 11 | 1 |
| XBFZZ | | WOODRUFF, KEY 23A9C17 (51436) | EA | 1 | | | | | | | | | 11 | 2 |
| XBFZZ | | CRANKSHAFT, ASSEMBLY 3W75291T20D (51436) | EA | 1 | | | | | | | | | 11 | 3 |
| XBFZZ | | BUSHING, CRANK PIN 3W75326 (51436) | EA | 1 | | | | | | | | | 11 | 4 |
| XBFZZ | | NIPPLE, PIPE 18A7W22 (51436) | EA | 1 | | | | | | | | | 11 | 5 |
| XBFZZ | | COUPLING, PIPE 1IA7W4 (51436) | EA | 1 | | | | | | | | | 11 | 6 |
| XBFZZ | | PLUG, PIPE, HEX HEAD 35A7B5 (51436) | EA | 1 | | | | | | | | | 11 | 7 |
| XBFZZ | | DECAL, INSTRUCTION 8A16X127 (51436) | EA | 1 | | | | | | | | | 11 | 8 |
| XBFZZ | | BREATHER, TUBE 3W75256T1 (51436) | EA | 1 | | | | | | | | | 11 | 9 |
| XBFZZ | | CONNECTOR, TUBE X1506IC5 (51436) | EA | 1 | | | | | | | | | 11 | 10 |
| PAFZZ | 5306-225-8497 | SCREW, CAP 35A2C56 (51436) | EA | 4 | * | * | * | * | * | * | * | * | 11 | 11 |
| XBFZZ | | WASHER, LOCK X1016T33 (51436) | EA | 4 | | | | | | | | | 11 | 12 |
| XBFZZ | | COVER, SHAFT END COMPLETE 3W75293T1O (51436) | EA | 1 | | | | | | | | | 11 | 13 |
| XAFZZ | | COVER, SHAFT END 3W6865P1 (51436) | EA | 1 | | | | | | | | | 11 | 14 |
| KFFZZ | | GASKET 3W6868 (51436) | EA | 1 | SEE | SET | 4310-611-7184 | | | | | | 11 | 15 |
| PAFZZ | 5330-240-1508 | SEAL, SHAFT END W99622T1 (51436) | EA | 1 | * | * | * | * | * | * | * | * | 11 | 16 |
| XBFZZ | | FRAME, COMPRESSOR 3F13643 (51436) | EA | 1 | | | | | | | | | 11 | 17 |
| | | GROUP 04 - RECEIVER, CHECK VALVE, SERVICE AND DRAIN LINE | | | | | | | | | | | | |
| XBFZZ | | AIR RECEIVER ASSEMBLY 3W75401C200215 (51436) | EA | 1 | | | | | | | | | 12 | 1 |
| XBFZZ | | CHECK VALVE COMPLETE 3W75305T50 (51436) | EA | 1 | | | | | | | | | 12 | 2 |
| XAFZZ | | BODY 3W11254P3 (51436) | EA | 1 | | | | | | | | | 12 | 3 |
| XAFZZ | | CAP 3W11255 (51436) | EA | 1 | | | | | | | | | 12 | 4 |
| XAFZZ | | DISC 3W11256 (51436) | EA | 1 | | | | | | | | | 12 | 5 |
| XAFZZ | | SPRING X1091PP458 (51436) | EA | 1 | | | | | | | | | 12 | 6 |
| XBFZZ | | BUSHING REDUCING 23A7M11 (51436) | EA | 1 | | | | | | | | | 12 | 7 |
| XBFZZ | 4720-253-0872 | BUSHING REDUCING 23A7M5 (51436) | EA | 1 | | | | | | | | | 12 | 8 |

| (1) SMR CODE | (2) FEDERAL STOCK NUMBER | (3) DESCRIPTION USABLE ON CODE REFERENCE NUMBER & MFR CODE | (4) UNIT OF MEAS | (5) QTY INC IN UNIT | (6) 30 DAYS DS MAINT ALLOWANCE | | | (7) 30 DAYS GS MAINT ALLOWANCE | | | (8) 1-YEAR ALW PER 100 EQUIP CNTGCV | (9) DEPOT MAINT ALW PER 100 EQUIP | (10) ILLUSTRATION | |
|--------------------|-----------------------------------|--|---------------------------|---------------------------------|---|-------|--------|---|-------|--------|---|---|----------------------|-------------|
| | | | | | (a) | (b) | (c) | (a) | (b) | (c) | | | (a) | (b) |
| | | | | | 1-20 | 21-50 | 51-100 | 1-20 | 21-50 | 51-100 | | | FIGURE NO. | ITEM NO. |
| XAOZZ | | NIPPLE, HOSE ADAPTER W114007 (51436) | EA | 1 | | | | | | | | 12 | 9 | |
| PAOZZ | 4720-253-0872 | AIR HOSE FLEXIBLE 3W95993 (51436) | EA | 1 | * | * | * | * | * | * | * | 12 | 10 | |
| PAOZZ | 4910-204-2644 | DEVICE, INFLATION 3W95994 (51436) | EA | 1 | * | * | * | * | * | * | * | 12 | 11 | |
| XAOZZ | | SERVICE LINE ASSEMBLY 3W75407T3 (51436) | EA | 1 | | | | | | | | 12 | 12 | |
| XAOZZ | | NIPPLE, PIPE 18A7W5 (51436) | EA | 1 | | | | | | | | 12 | 13 | |
| XAOZZ | | VALVE, GLOBE W75410T2 (51436) | EA | 1 | | | | | | | | 12 | 14 | |
| XAOZZ | | NIPPLE, CLOSE 18A7W4 (51436) | EA | 1 | | | | | | | | 12 | 15 | |
| XAOZZ | | BUSHING, REDUCING 23A7M5 (51436) | EA | 1 | | | | | | | | 12 | 16 | |
| XAOZZ | | TEE, REDUCING 74A7M18 (51436) | EA | 1 | | | | | | | | 12 | 17 | |
| PAOZZ | 4820-244-0365 | VALVE, SAFETY X1396T28-210 (51436) | EA | 1 | * | * | * | * | * | * | * | 12 | 18 | |
| PAOZZ | 4820-244-0413 | VALVE, DRAIN W99807 (51436) | EA | 1 | * | * | * | * | * | * | * | 12 | 19 | |
| XBOZZ | | ELBOW, STREET 67A7M2 (51436) | EA | 1 | | | | | | | | 12 | 20 | |
| XBOZZ | | GAUGE, PRESSURE 3A12N37 (51436) | EA | 1 | | | | | | | | 12 | 21 | |
| XBFZZ | | MOUNTING, STARTER ASSEMBLY 3W8480OT1 (51436) | EA | 1 | | | | | | | | 12 | 22 | |
| XOFZZ | | SCREW, ROUND HEAD 83A2C144 (51436) | EA | 3 | | | | | | | | 12 | 23 | |
| PAOZZ | 5310-582-5965 | WASHER, LOCK 14A5C55 (51436) | EA | 3 | * | * | * | * | * | * | * | 12 | 24 | |
| PAOZZ | 5305-269-3219 | SCREW, CAP 35A2C120 (51436) | EA | 2 | * | * | * | * | * | * | * | 12 | 25 | |
| PAOZZ | 5310-637-9541 | WASHER, LOCK 14A5C76 (51436) | EA | 2 | * | * | * | * | * | * | * | 12 | 26 | |
| XBOZZ | | BRACKET, STARTER W90511 (51436) | EA | 1 | | | | | | | | 12 | 27 | |
| XBOZZ | | SPACER, BRACKET 3W75479T15 (51436) | EA | 2 | | | | | | | | 12 | 28 | |
| XBOZZ | | TIGHTENER, BELT ASSEMBLY 3W75539T9 (51436) | EA | 1 | | | | | | | | 12 | 29 | |
| PAOZZ | 5310-880-7744 | NUT MS51967-5 (96906) | EA | 4 | * | * | * | * | * | * | * | 12 | 30 | |
| PAOZZ | 5310-407-9566 | WASHER, LOCK MS35338-45 (96906) | EA | 4 | * | * | * | * | * | * | * | 12 | 31 | |
| PAOZZ | 5305-225-9081 | SCREW, CAP 35A2C60 (51436) | EA | 3 | * | * | * | * | * | * | * | 12 | 32 | |
| PAOZZ | 5310-768-0318 | NUT, TIGHTENER Y6A4C5 (51436) | EA | 1 | * | * | * | * | * | * | * | 12 | 33 | |
| XBOZZ | | CLIP, TIGHTENER 3W11261 (51436) | EA | 1 | | | | | | | | 12 | 34 | |
| XBOZZ | | TIGHTENER, BELT X1429TX520X6 (51436) | EA | 1 | | | | | | | | 12 | 35 | |

| (1) SMR CODE | (2) FEDERAL STOCK NUMBER | (3) DESCRIPTION USABLE ON CODE REFERENCE NUMBER & MFR CODE | (4) UNIT OF MEAS | (5) QTY INC IN UNIT | (6) 30 DAYS DS MAINT ALLOWANCE | | | (7) 30 DAYS GS MAINT ALLOWANCE | | | (8) 1-YEAR ALW PER 100 EQUIP CNTGCV | (9) DEPOT MAINT ALW PER 100 EQUIP | (10) ILLUSTRATION | |
|--------------------|-----------------------------------|---|---------------------------|---------------------------------|---|-------|--------|---|-------|--------|---|---|----------------------|--------------------|
| | | | | | (a) | (b) | (c) | (a) | (b) | (c) | | | (a) FIGURE NO. | (b) ITEM NO. |
| | | | | | 1-20 | 21-50 | 51-100 | 1-20 | 21-50 | 51-100 | | | | |
| XBOZZ | | TUBE, BLOCK GAUGE 3W75211T5 (51436) | EA | 1 | | | | | | | | 12 | 36 | |
| XBOZZ | | CONNECTOR, TUBE X1506IC5X4 (51436) | EA | 1 | | | | | | | | 12 | 37 | |
| XBOZZ | | ELBOW, TUBE X1506IE5 (51436) | EA | 1 | | | | | | | | 12 | 38 | |
| PBFZZ | 4310-611-7184 | SET, GASKET 1- O-RING 1- GASKET 1- O-RING 1- GASKET AIR HEAD 1- GASKET 1- GASKET 2- GASKET 1- GASKET SPACER 1- GASKET 1- GASKET | EA | 1 | * | * | * | * | * | * | * | SET | | |
| | | | | | | | | | | | | 7 | 19 | |
| | | | | | | | | | | | | 7 | 16 | |
| | | | | | | | | | | | | 7 | 10 | |
| | | | | | | | | | | | | 9 | 4 | |
| | | | | | | | | | | | | 9 | 9 | |
| | | | | | | | | | | | | 9 | 18 | |
| | | | | | | | | | | | | 10 | 4 | |
| | | | | | | | | | | | | 10 | 8 | |
| | | | | | | | | | | | | 10 | 15 | |
| | | | | | | | | | | | | 11 | 15 | |
| PBFZZ | 4310-411-3848 | SET, PISTON RINGS X1457T7A (51436) 2- RING COMPRESSION 1- RING, OIL 1- RING, OIL 2- RING, COMPRESSION 1- RING, OIL 1- RING, OIL | EA | * | * | * | * | * | * | * | * | SET | | |
| | | | | | | | | | | | | 9 | 24 | |
| | | | | | | | | | | | | 9 | 25 | |
| | | | | | | | | | | | | 9 | 26 | |
| | | | | | | | | | | | | 10 | 21 | |
| | | | | | | | | | | | | 10 | 22 | |
| | | | | | | | | | | | | 10 | 23 | |

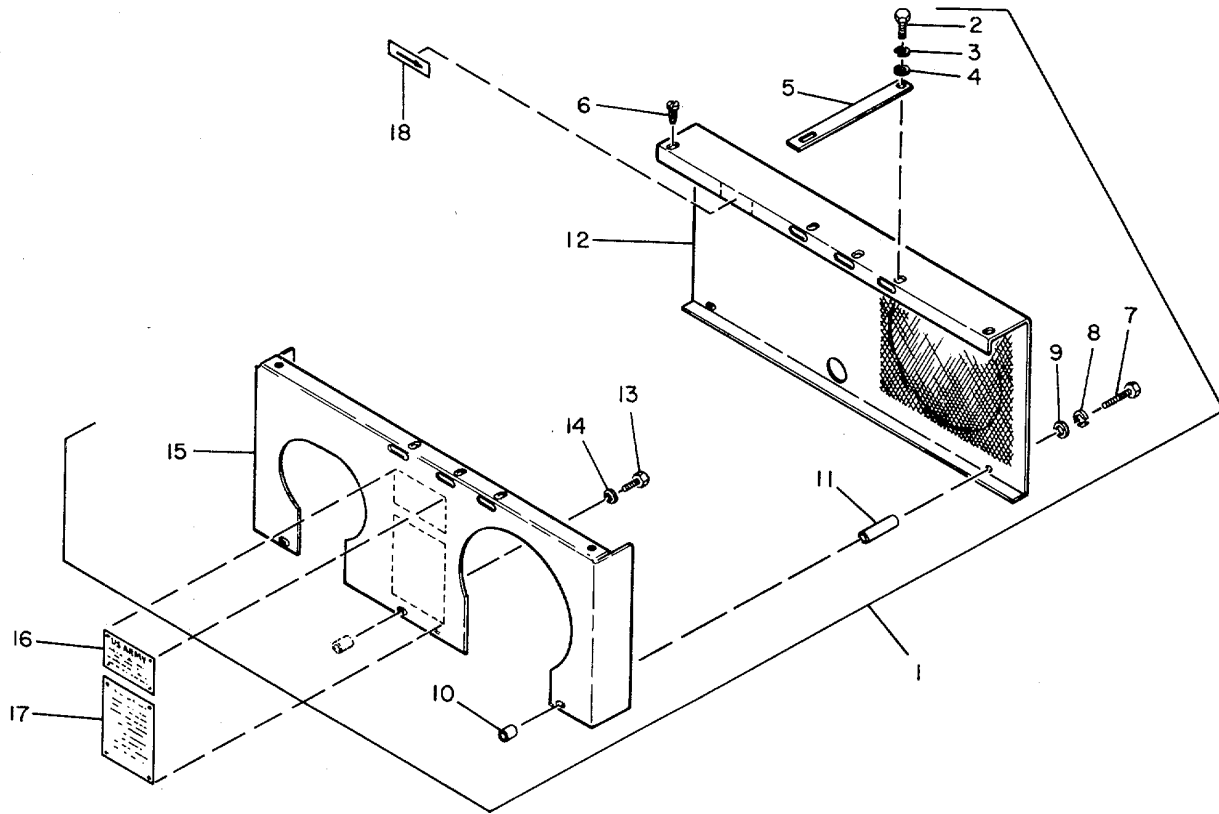


Figure 1. Belt Guard assembly

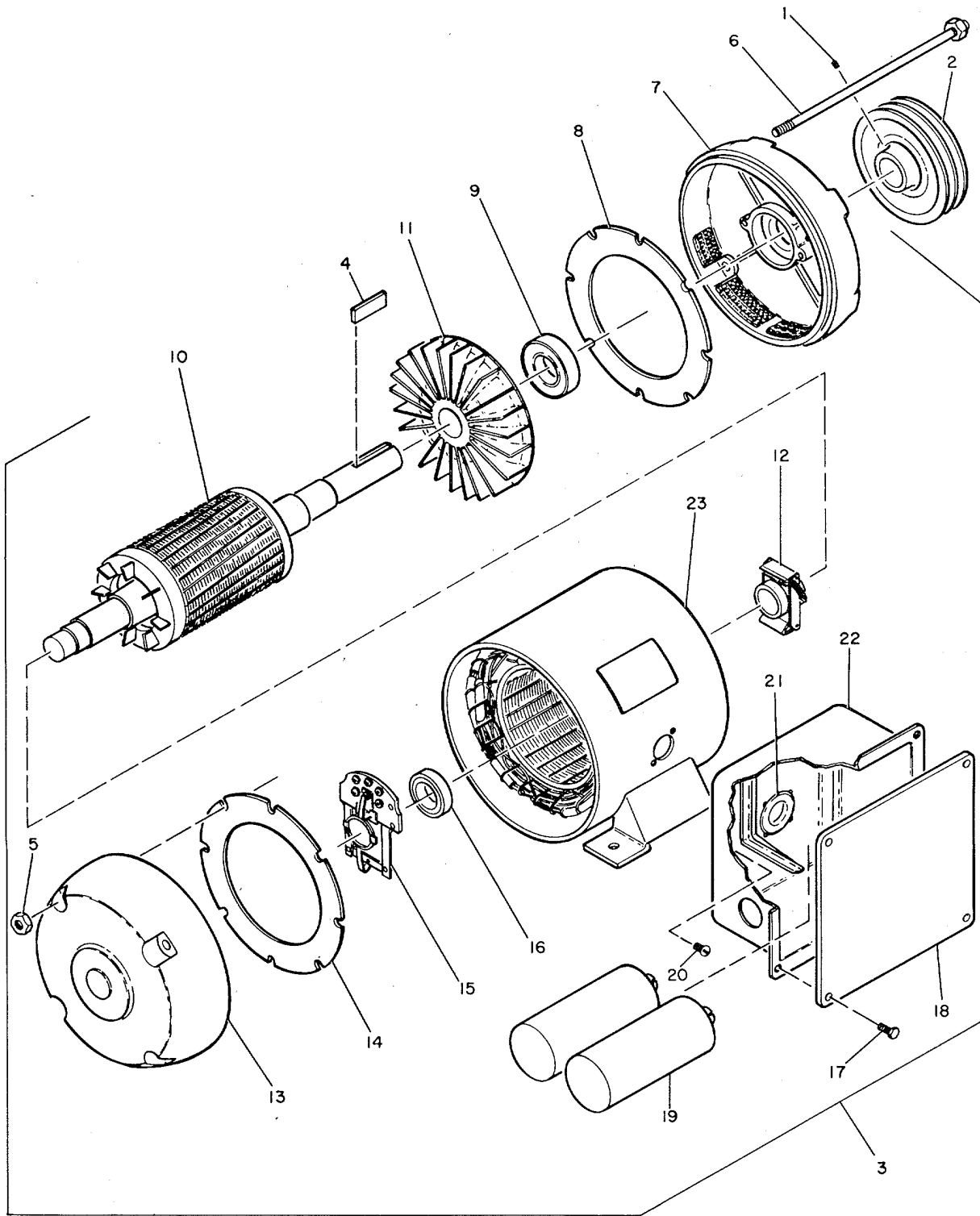


Figure 2. Compressor Motor

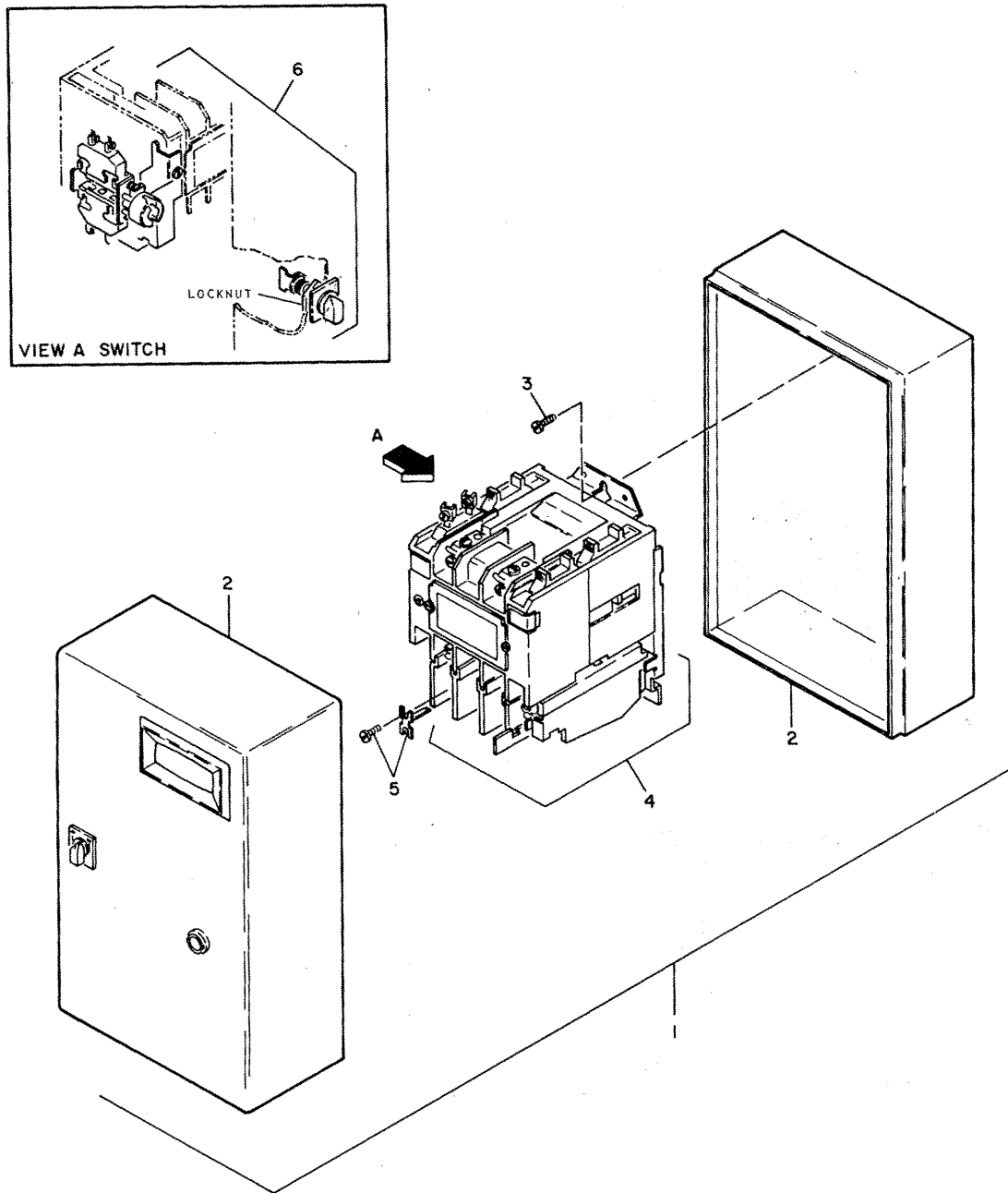
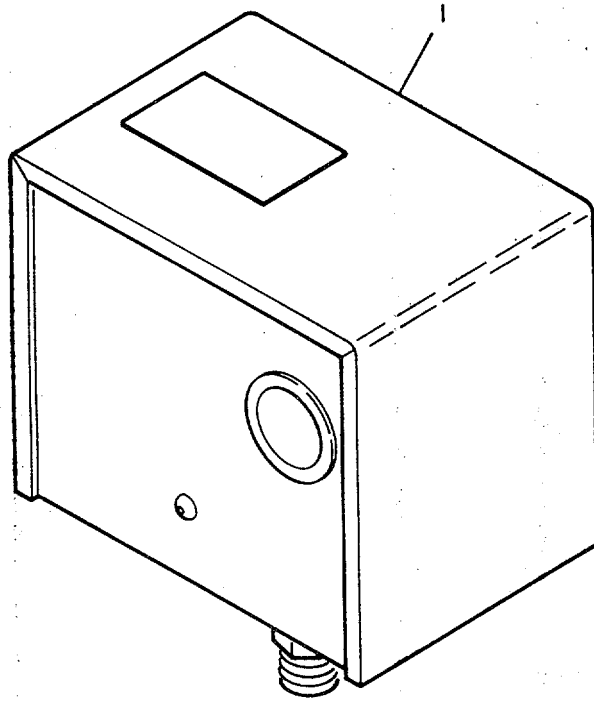
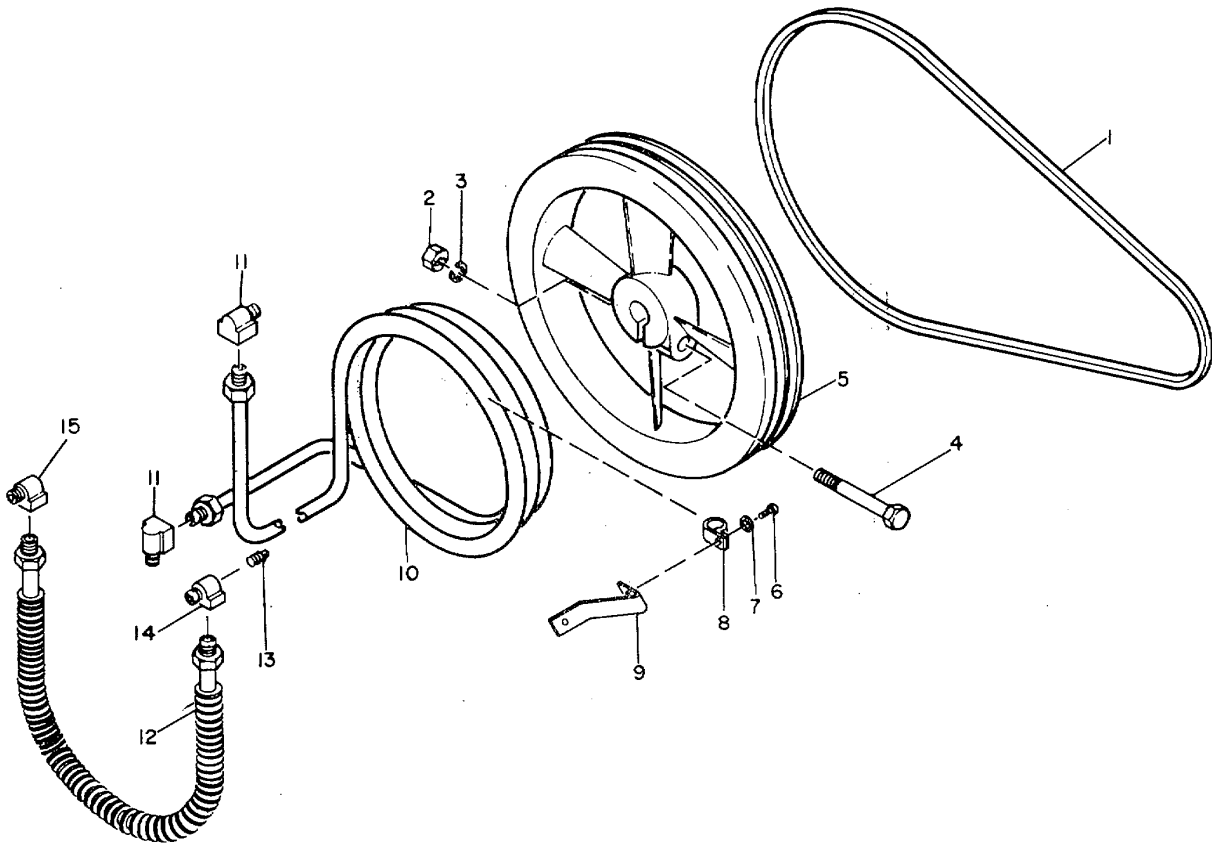


Figure 3. Starter and Selector Switch, Complete



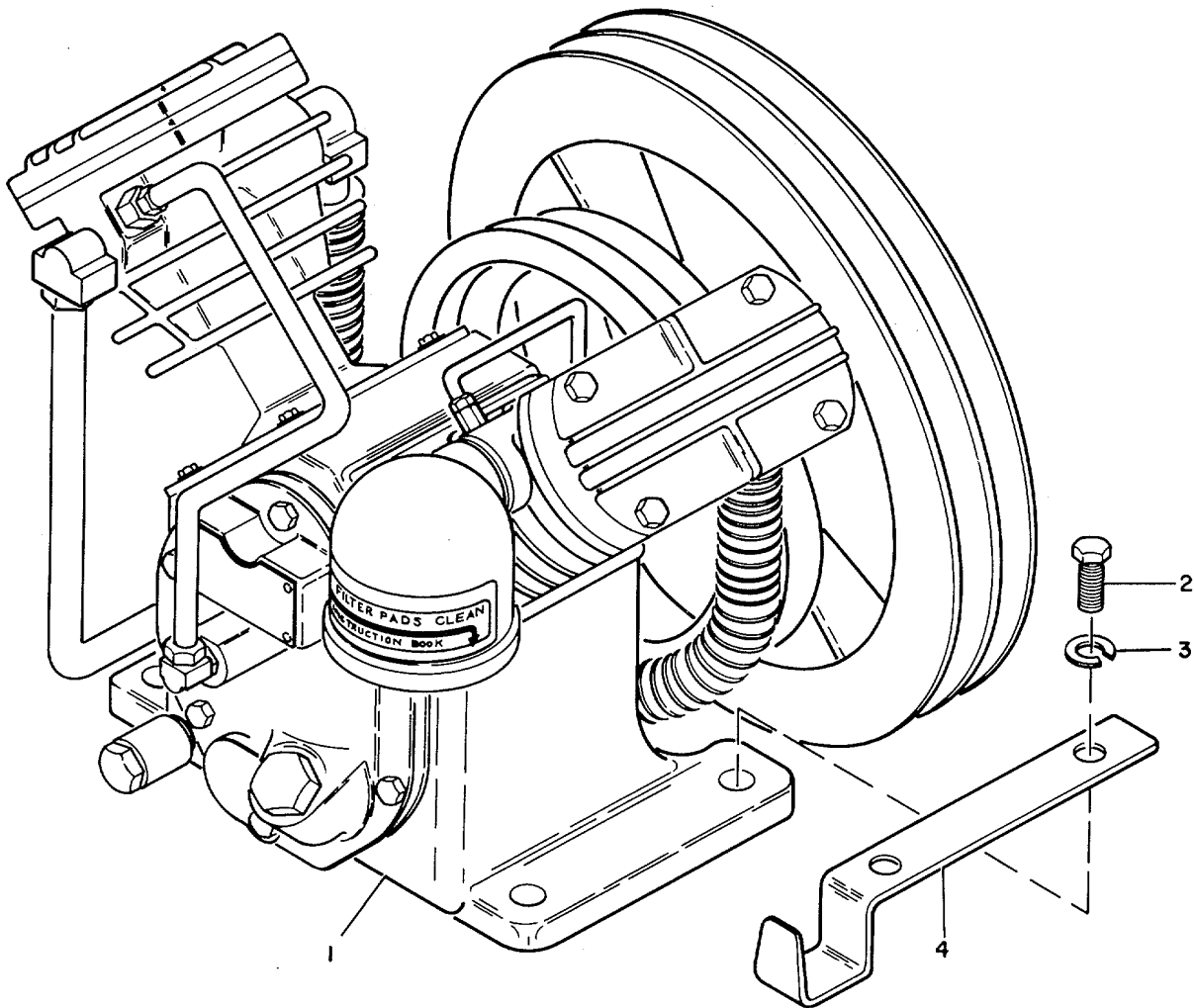
ME 4310-348-24P/4

Figure 4. Pressure Switch



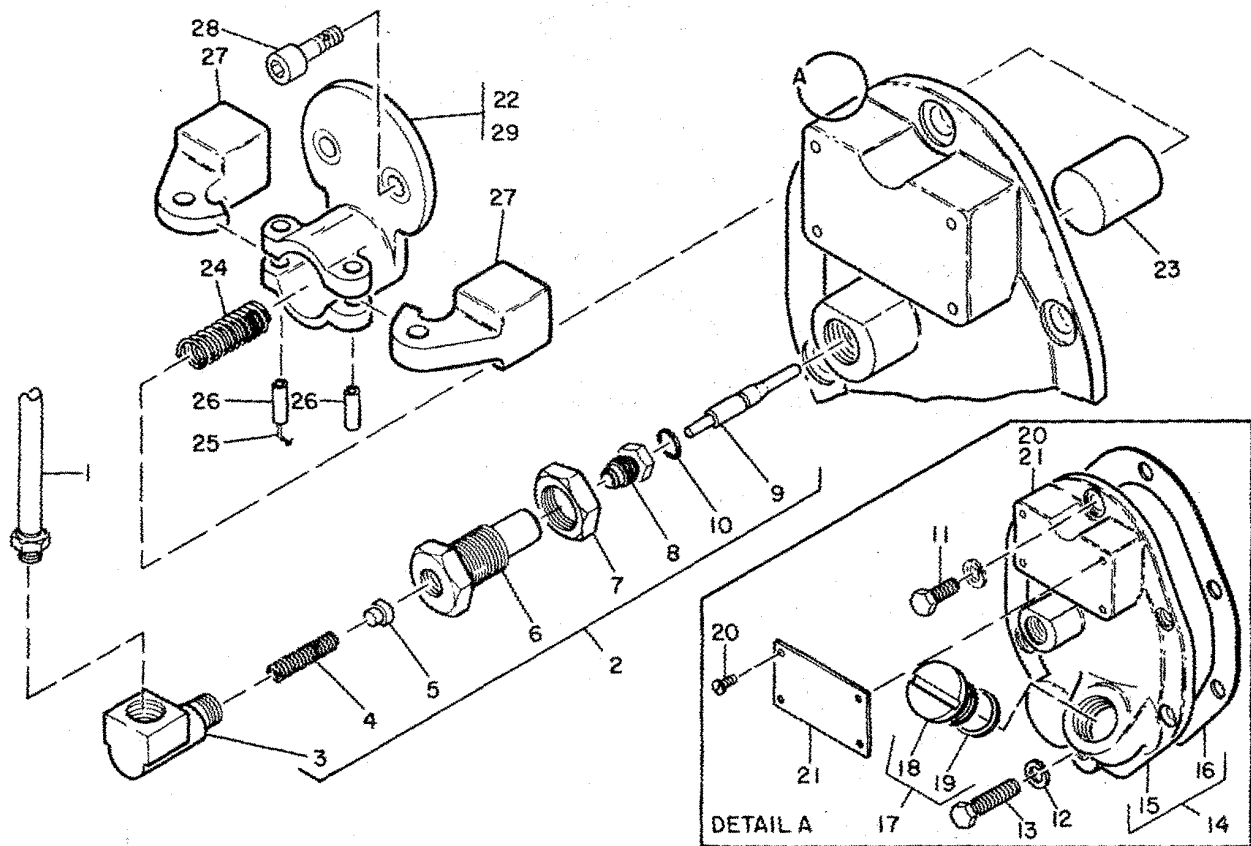
ME 4310-348-24P/5

Figure 5. V - Belts, Aftercooler and Intercooler



ME 4310-348-24P/6

Figure 6. Bare Air Compressor



ME 4310-438-24P/7

Figure 7. Pilot Valve, Centrifugal Unloader and Frame End Covers

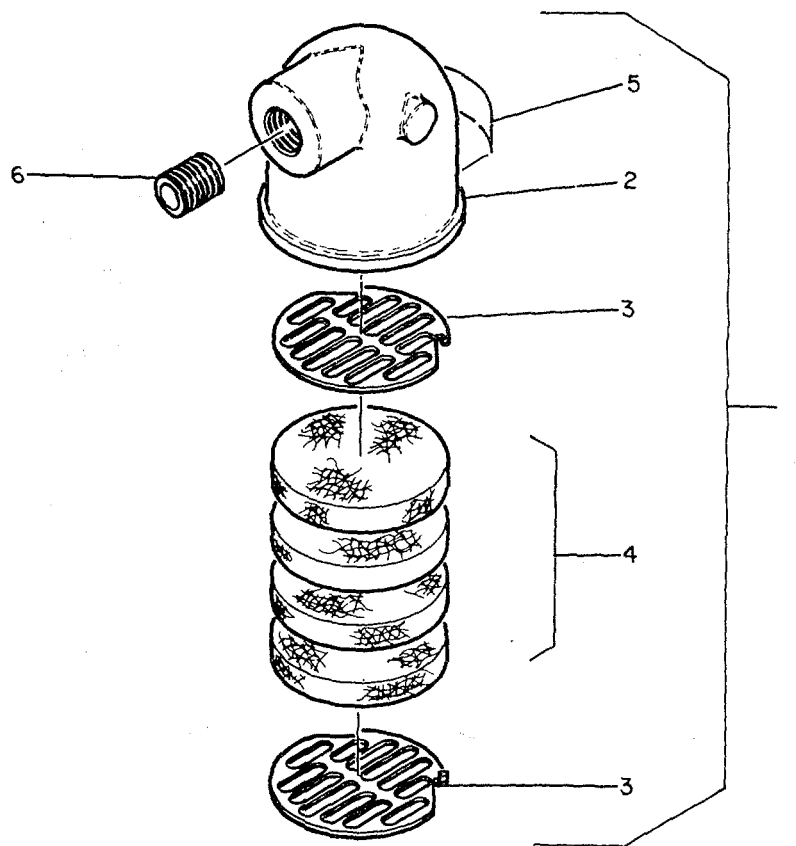


Figure 8. Inlet Filter, Complete

ME 4310-438-24P/8

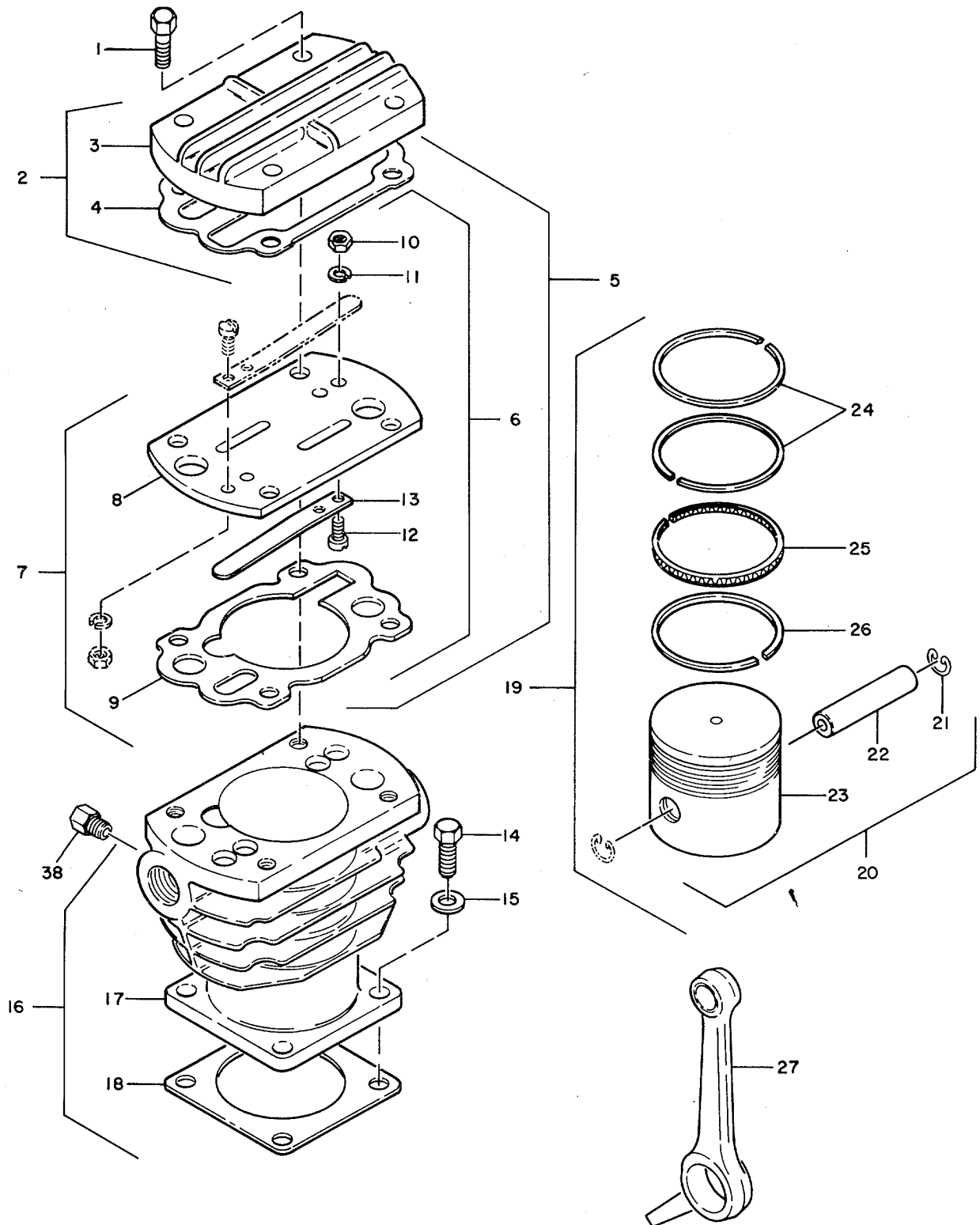


Figure 9. L P. Piston, Cylinder and Rod Assembly

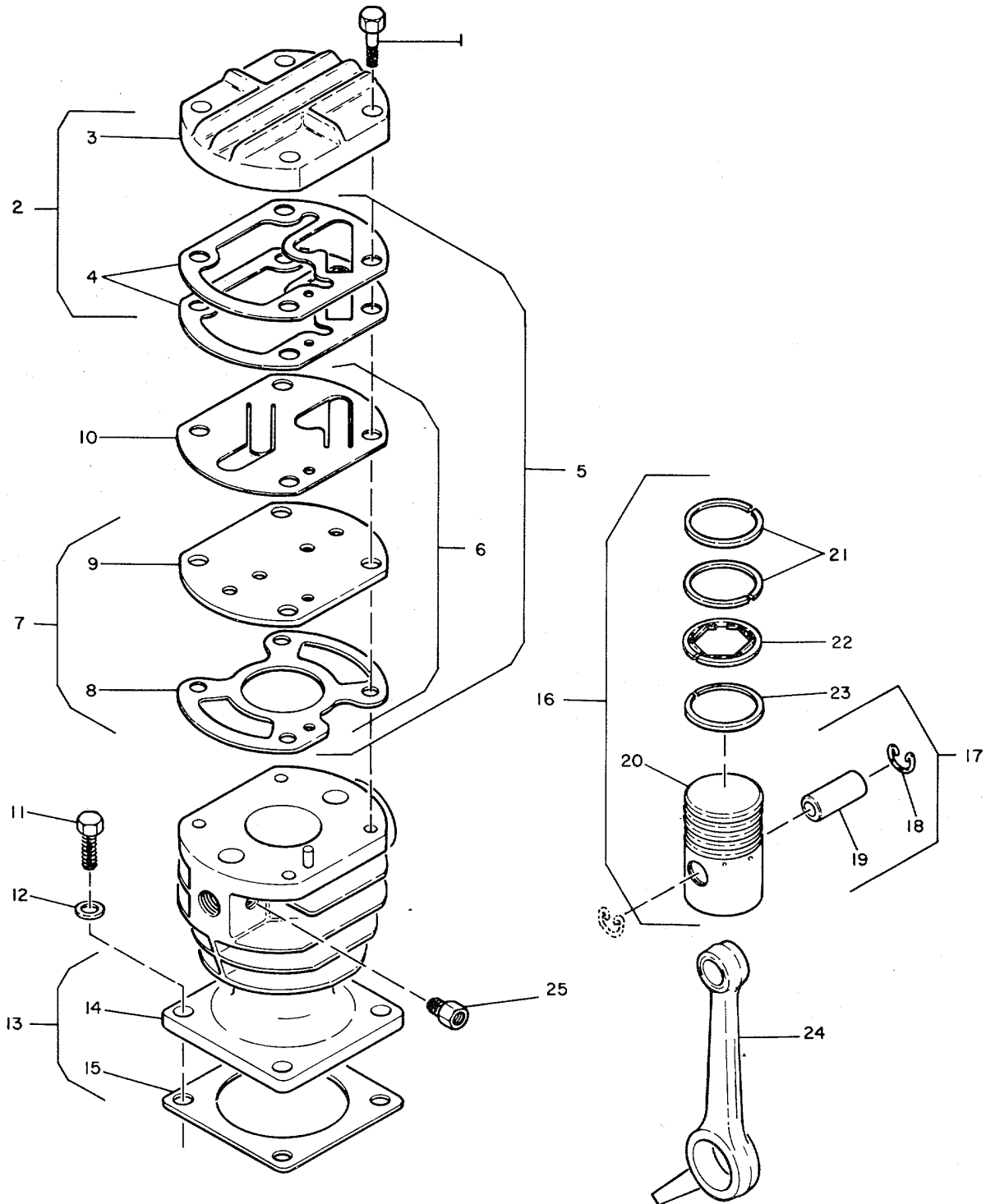
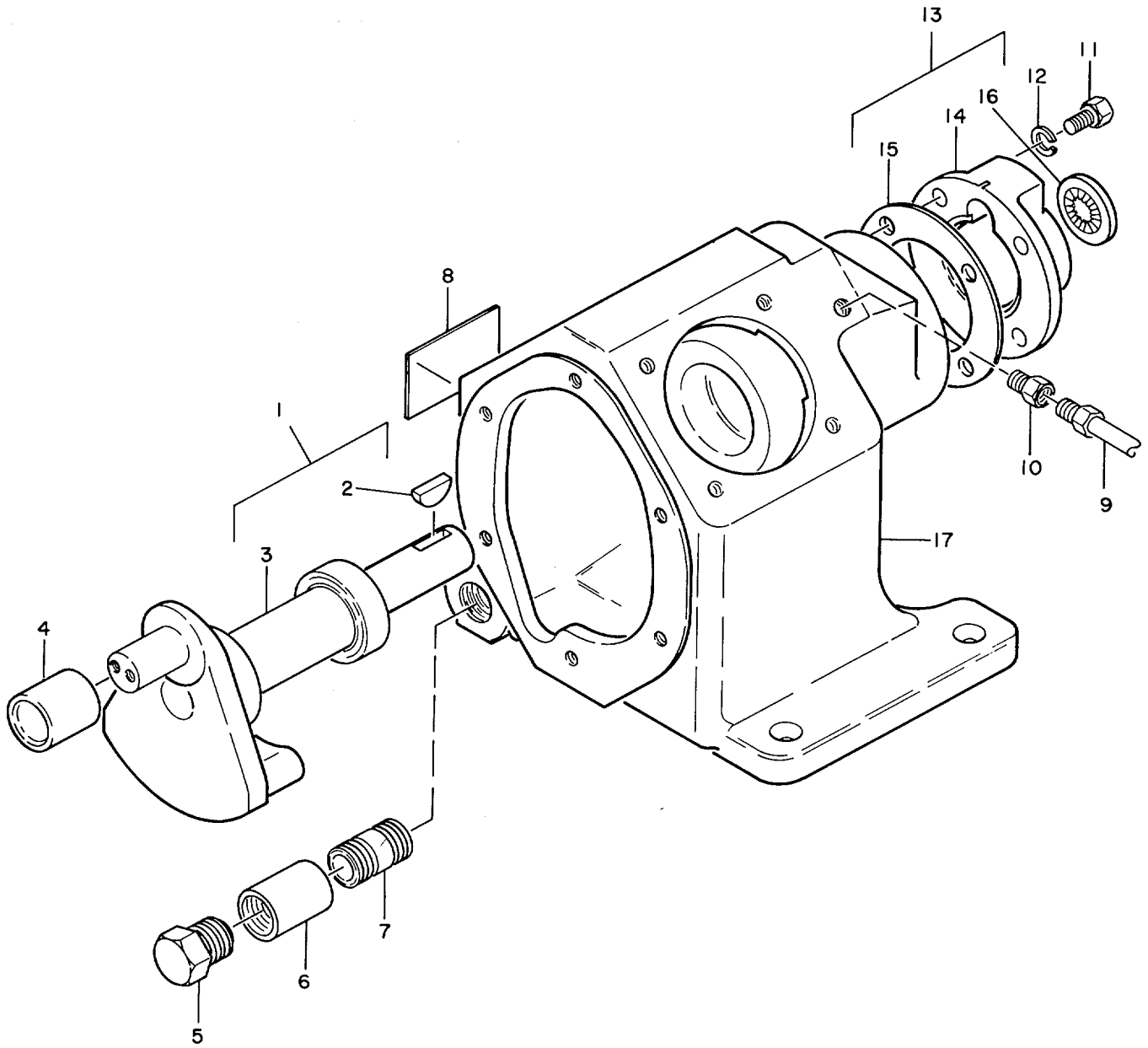
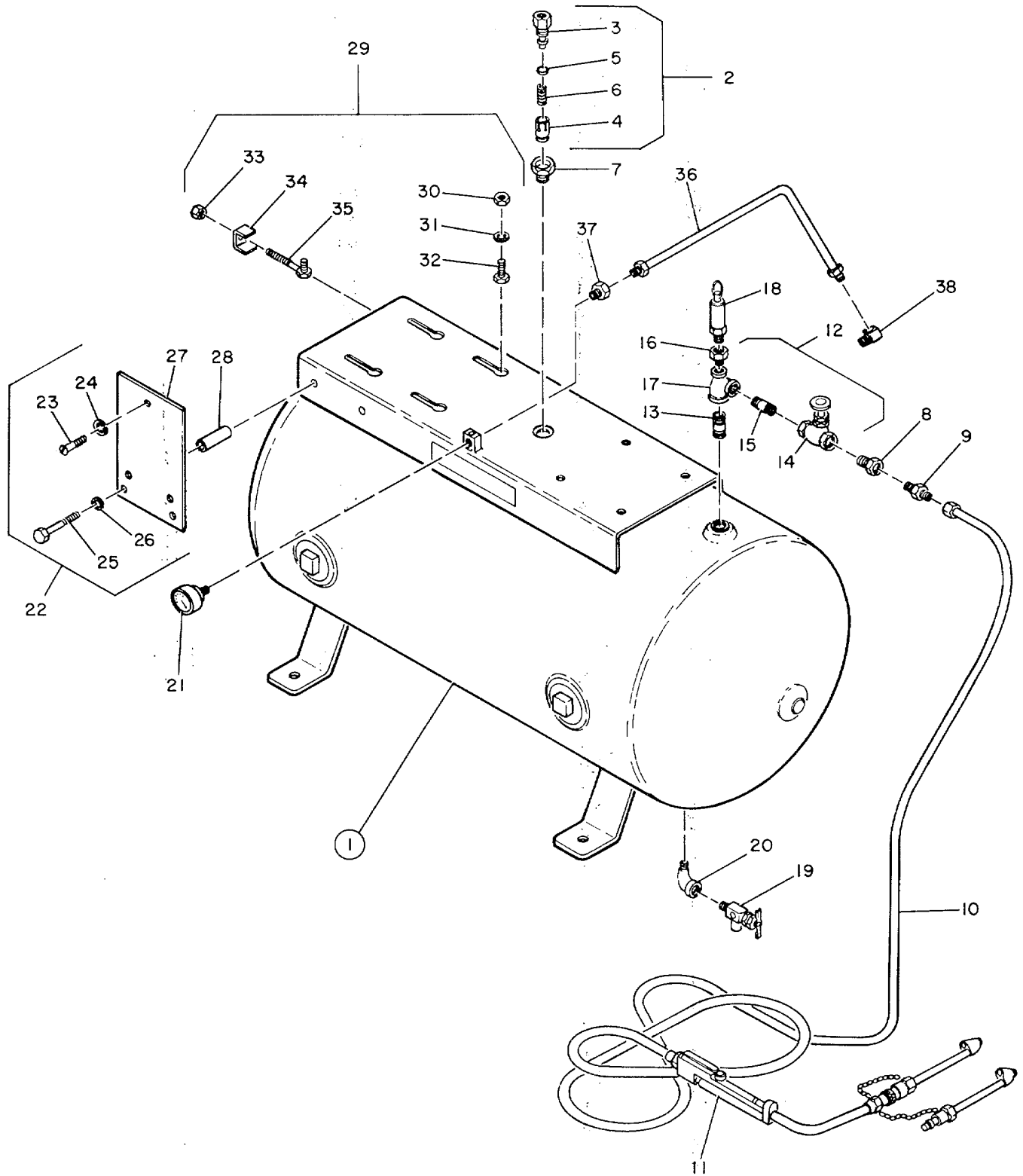


Figure 10. H. P. Piston, Cylinder and Rod Assembly



ME 4310-438-24P/11

Figure 11. Frame, Crankshaft and Oil Seal



ME 4310-438-24P/12

Figure 12. Receiver, Check Valve, Service and Drain

SECTION VII. FEDERAL STOCK NUMBER AND REFERENCE NUMBER INDEX

| <u>Stock Number</u> | <u>Figure No.</u> | <u>Item No.</u> | <u>Stock Number</u> | <u>Figure No.</u> | <u>Item No.</u> |
|---------------------|-------------------|-----------------|---------------------|-------------------|-----------------|
| 3030-278-1670 | 5 | 1 | 5306-225-8497 | 7 | 11 |
| 4310-253-0871 | 8 | 4 | | 11 | 11 |
| 4310-411-3848 | SET | | 5305-225-9081 | 7 | 13 |
| 4310-611-7184 | SET | | 5310-045-3299 | 5 | 7 |
| 4720-253-0872 | 12 | 8 | 5310-080-6004 | 1 | 4 |
| | 12 | 10 | | 1 | 9 |
| 4910-204-2644 | 12 | 11 | 5310-407-9566 | 12 | 31 |
| 5305-001-5115 | 1 | 13 | 5310-582-5965 | 12 | 24 |
| | 9 | 1 | 5310-584-5272 | 5 | 3 |
| | 10 | 1 | | 6 | 3 |
| 5305-071-1774 | 5 | 4 | 5310-637-9541 | 1 | 3 |
| 5305-225-9081 | 12 | 32 | | 1 | 8 |
| 5305-269-3206 | 1 | 2 | | 1 | 14 |
| 5305-269-3210 | 9 | 14 | | 12 | 26 |
| | 10 | 11 | 5310-761-6882 | 9 | 10 |
| 5305-269-3214 | 1 | 2 | 5310-768-0318 | 5 | 2 |
| | 1 | 13 | | 12 | 33 |
| 5305-269-3219 | 12 | 25 | 5310-880-7744 | 12 | 30 |
| 5305-782-9495 | 6 | 2 | | | |

| <u>Reference No.</u> | <u>Mfg Code</u> | <u>Fig No.</u> | <u>Item No.</u> | <u>Reference No.</u> | <u>Mfg Code</u> | <u>Fig No.</u> | <u>Item No.</u> |
|----------------------|-----------------|----------------|-----------------|----------------------|-----------------|----------------|-----------------|
| CW0805 | 51436 | 5 | 8 | MS51967-5 | 96906 | 12 | 30 |
| D36903 | 51436 | 9 | 23 | MS90725-11 | 96906 | 6 | 2 |
| D36945 | 51436 | 10 | 20 | MS90725-121 | 96906 | 5 | 4 |
| ETM012-1 | 12584 | 3 | 2 | MS90725-32 | 96906 | 7 | 11 |
| H36319 | 51436 | 5 | 10 | MS90725-36 | 96906 | 7 | 13 |
| KTM7 | 12584 | 3 | 6 | MS90725-55 | 96906 | 1 | 2 |
| L49780 | 51436 | 6 | 1 | MS90725-59 | 96906 | 9 | 14 |
| MS27183-14 | 96906 | 1 | 4 | MS90725-64 | 96906 | 1 | 2 |
| | 96906 | 1 | 9 | | 96906 | 1 | 13 |
| MS27183-4 | 96906 | 1 | 4 | R53550 | 51436 | 6 | 4 |
| MS35338-10 | 96906 | 5 | 3 | R53561 | 51436 | 5 | 9 |
| MS35338-40 | 96906 | 1 | 8 | T13AK21-76 | 12584 | 3 | 1 |
| | 96906 | 1 | 14 | T13U021-76 | 12584 | 3 | 4 |
| | 96906 | 5 | 3 | T147-8 | 12584 | 3 | 3 |
| MS35338-42 | 96906 | 5 | 7 | W111040 | 51436 | 1 | 17 |
| MS35338-44 | 96906 | 9 | 11 | W111042 | 51436 | 1 | 16 |
| MS35338-45 | 96906 | 12 | 31 | W114007 | 51436 | 12 | 9 |
| MS35338-46 | 96906 | 1 | 3 | W75410T2 | 51436 | 12 | 14 |
| MS35338-48 | 96906 | 6 | 3 | W90511 | 51436 | 12 | 27 |
| MS39255-2A68 | 96906 | 5 | 1 | W99597T12 | 51436 | 1 | 6 |
| MS51967-14 | 96906 | 5 | 2 | W99622T1 | 51436 | 11 | 16 |
| MS51967-2 | 96906 | 9 | 10 | W99807 | 51436 | 12 | 19 |

SECTION VII. FEDERAL STOCK NUMBER AND REFERENCE NUMBER INDEX

| <u>Reference No.</u> | <u>Mfg Code</u> | <u>Fig No.</u> | <u>Item No.</u> | <u>Reference No.</u> | <u>Mfg Code</u> | <u>Fig No.</u> | <u>Item No.</u> |
|----------------------|-----------------|----------------|-----------------|----------------------|-----------------|----------------|-----------------|
| X1016T33 | 51436 | 7 | 12 | 2452 | 12584 | 3 | 5 |
| | 51436 | 11 | 12 | 3A12N37 | 51436 | 12 | 21 |
| X1016T34 | 51436 | 9 | 15 | 3F13643 | 51436 | 11 | 17 |
| | 51436 | 10 | 12 | 3H12422-2A487-112 | | | |
| X1091PP311 | 51436 | 7 | 24 | | 51436 | 2 | 2 |
| X1091PP458 | 51436 | 12 | 6 | 3H12718 | 51436 | 1 | 15 |
| X1091PP660 | 51436 | 7 | 4 | 3H26670 | 51436 | 7 | 15 |
| X1396T28-210 | 51436 | 12 | 18 | 3R40620 | 51436 | 7 | 16 |
| X1429TX520X6 | 51436 | 12 | 35 | 3R40639 | 51436 | 9 | 27 |
| X1434T71 | 51436 | 5 | 12 | | 51436 | 10 | 24 |
| X1440T28B | 51436 | 10 | 21 | 3R4079 | 51436 | 10 | 14 |
| X1440T28H | 51436 | 10 | 23 | 3R4080 | 51436 | 9 | 17 |
| X1440T28K | 51436 | 10 | 22 | 3R4081 | 51436 | 9 | 3 |
| X1440T46B | 51436 | 9 | 24 | 3R8172 | 51436 | 5 | 5 |
| X1440T46H | 51436 | 9 | 26 | 3W11254P3 | 51436 | 12 | 3 |
| X1440T46M | 51436 | 9 | 25 | 3W11255 | 51436 | 12 | 4 |
| X1506IC5 | 51436 | 10 | 25 | 3W11256 | 51436 | 12 | 5 |
| | 51436 | 11 | 10 | 3W11261 | 51436 | 12 | 34 |
| X1506IC5X4 | 51436 | 12 | 37 | 3W11282 | 51436 | 5 | 14 |
| X1506IE12 | 51436 | 5 | 15 | 3W11477 | 51436 | 10 | 4 |
| X1506IE5 | 51436 | 7 | 3 | 3W11478 | 51436 | 10 | 8 |
| | 51436 | 12 | 38 | 3W11558 | 51436 | 8 | 2 |
| X1506IE8 | 51436 | 5 | 11 | 3W11857 | 51436 | 9 | 22 |
| Y6A4C5 | 51436 | 12 | 33 | 3W11858 | 51436 | 10 | 19 |
| 109A290 | 51436 | 2 | 1 | 3W11859 | 51436 | 9 | 21 |
| 11A7W4 | 51436 | 11 | 6 | | 51436 | 10 | 18 |
| 12A5C4 | 51436 | 1 | 9 | 3W34427 | 51436 | 7 | 20 |
| 12X4 | 51436 | 7 | 25 | 3W39875 | 51436 | 1 | 12 |
| 14A5C55 | 51436 | 12 | 24 | 3W39900 | 51436 | 7 | 8 |
| 14A5C76 | 51436 | 1 | 8 | 3W45928 | 51436 | 1 | 18 |
| | 51436 | 1 | 14 | 3W46062 | 51436 | 7 | 7 |
| | 51436 | 12 | 26 | 3W58780 | 51436 | 7 | 5 |
| 1506105 | 51436 | 9 | 28 | 3W60504 | 51436 | 8 | 3 |
| 16A4C5 | 51436 | 12 | 33 | 3W60506 | 51436 | 8 | 4 |
| 18A7W22 | 51436 | 11 | 5 | 3W63623 | 51436 | 7 | 9 |
| 18A7W4 | 51436 | 12 | 15 | 3W63625 | 51436 | 7 | 6 |
| 18A7W5 | 51436 | 8 | 6 | 3W6865P1 | 51436 | 11 | 14 |
| | 51436 | 12 | 13 | 3W6866 | 51436 | 9 | 8 |
| 182TCDR7072 | 38151 | 2 | 3 | 3W6868 | 51436 | 11 | 15 |
| 20A11CM006 | 51436 | 7 | 10 | 3W6869 | 51436 | 9 | 9 |
| 20A11CM212 | 51436 | 7 | 19 | 3W6870 | 51436 | 9 | 4 |
| 23A7M11 | 51436 | 12 | 7 | 3W6874 | 51436 | 9 | 13 |
| 23A7M5 | 51436 | 12 | 8 | 3W75211T5 | 51436 | 12 | 36 |
| | 51436 | 12 | 16 | 3W75251 | 51436 | 8 | 5 |
| 23A9C17 | 51436 | 11 | 2 | 3W75256T1 | 51436 | 11 | 9 |

SECTION VII. FEDERAL STOCK NUMBER AND REFERENCE NUMBER INDEX

| <u>Reference No.</u> | <u>Mfg Code</u> | <u>Fig No.</u> | <u>Item No.</u> | <u>Reference No.</u> | <u>Mfg Code</u> | <u>Fig No.</u> | <u>Item No.</u> |
|--------------------------|---------------------|--------------------|---------------------|--------------------------|---------------------|--------------------|---------------------|
| 3W75256T2 | 51436 | 7 | 1 | 3W84800T1 | 51436 | 12 | 22 |
| 3W75278T40 | 51436 | 8 | 1 | 3W95993 | 51436 | 12 | 10 |
| 3W75288T20 | 51436 | 7 | 22 | 3W95994 | 51436 | 12 | 11 |
| 3W75289T10 | 51436 | 7 | 2 | 30A7M3 | 51436 | 5 | 13 |
| 3W75291T20 | 51436 | 11 | 1 | 35A2C110 | 51436 | 10 | 11 |
| 3W75291T200 | 51436 | 11 | 3 | 35A2C115 | 51436 | 1 | 13 |
| 3W75292T10 | 51436 | 7 | 14 | | 51436 | 9 | 1 |
| 3W75293T10 | 51436 | 11 | 13 | | 51436 | 10 | 1 |
| 3W75294T10 | 51436 | 7 | 17 | 35A2C120 | 51436 | 12 | 25 |
| 3W75295T10 | 51436 | 10 | 17 | 35A2C130 | 51436 | 1 | 7 |
| 3W75295T100R | 51436 | 10 | 16 | 35A2C56 | 51436 | 11 | 11 |
| 3W75295T20 | 51436 | 9 | 20 | 35A2C60 | 51436 | 7 | 13 |
| 3W75295T20R | 51436 | 9 | 19 | | 51436 | 12 | 32 |
| 3W75296T35 | 51436 | 10 | 13 | 35A7B5 | 51436 | 11 | 7 |
| 3W75296T50 | 51436 | 9 | 16 | 4024252-1 | 38151 | 2 | 23 |
| 3W75298T40 | 51436 | 8 | 1 | 5022519-2 | 38151 | 2 | 10 |
| 3W75299T20 | 51436 | 10 | 5 | 5900054-7 | 38151 | 2 | 12 |
| 3W75299T20S | 51436 | 10 | 7 | 6102259-6 | 38151 | 2 | 7 |
| 3W75299T20X | 51436 | 10 | 6 | 6102608-4 | 38151 | 2 | 13 |
| 3W75299T30 | 51436 | 9 | 5 | 6200019-5 | 38151 | 2 | 15 |
| 3W75299T30S | 51436 | 9 | 7 | 67A7M2 | 51436 | 12 | 20 |
| 3W75299T30X | 51436 | 9 | 6 | 7A16X184 | 51436 | 7 | 21 |
| 3W75302T20 | 51436 | 10 | 2 | 74A7M18 | 51436 | 12 | 17 |
| 3W75302T30 | 51436 | 9 | 2 | 8A16X127 | 51436 | 11 | 8 |
| 3W75303 | 51436 | 7 | 26 | 83A2C144 | 51436 | 12 | 23 |
| 3W75305T50 | 51436 | 12 | 2 | 83A2C69 | 51436 | 5 | 6 |
| 3W75306 | 51436 | 7 | 23 | 830C5900 | 01121 | 4 | 1 |
| 3W75307 | 51436 | 7 | 27 | 87A2X144P | 51436 | 9 | 12 |
| 3W75310 | 51436 | 7 | 29 | 91A2A146N | 51436 | 7 | 28 |
| 3W75317 | 51436 | 10 | 9 | 911177-7 | 38151 | 2 | 9 |
| 3W75318 | 51436 | 10 | 10 | 9111771-3 | 38151 | 2 | 16 |
| 3W75319 | 51436 | 10 | 3 | 9115630-7 | 38151 | 2 | 19 |
| 3W75326 | 51436 | 11 | 4 | 9120796-7 | 38151 | 2 | 6 |
| 3W75330 | 51436 | 9 | 18 | 9137316-7 | 38151 | 2 | 21 |
| | 51436 | 10 | 15 | 91385088 | 38151 | 2 | 4 |
| 3W75401C200215 | 51436 | 12 | 1 | 9168160-1 | 38151 | 2 | 22 |
| 3W75407T3 | 51436 | 12 | 12 | 9185462-0 | 38151 | 2 | 20 |
| 3W75424T3 | 51436 | 1 | 5 | 9185582-5 | 38151 | 2 | 17 |
| 3W75478T6E | 51436 | 1 | 1 | 9186271-4 | 38151 | 2 | 5 |
| 3W75479T13 | 51436 | 1 | 11 | 9222490-6 | 38151 | 2 | 8 |
| 3W75479T15 | 51436 | 12 | 28 | 9222510-1 | 38151 | 2 | 14 |
| 3W75479T4 | 51436 | 1 | 10 | 9222640-6 | 38151 | 2 | 18 |
| 3W75539T9 | 51436 | 12 | 29 | 9241290-7 | 38151 | 2 | 11 |
| 3W82 | 51436 | 7 | 18 | | | | |

By Order of the Secretary of the Army:

CREIGHTON W. ABRAMS
General, United States Army
Chief of Staff

Official:

VERNE L. BOWERS
Major General, United States Army
The Adjutant General

Distribution:

To be distributed in accordance with DA Form 12-25A (qty rqr block no. 6) Organizational maintenance requirements for 5CFM, Air Compressor.

